



# Alaska Department of Transportation & Public Facilities

Steese Expressway/Johansen Expressway Interchange  
Fairbanks Bicycle and Pedestrian Advisory Committee Meeting

November 17, 2022

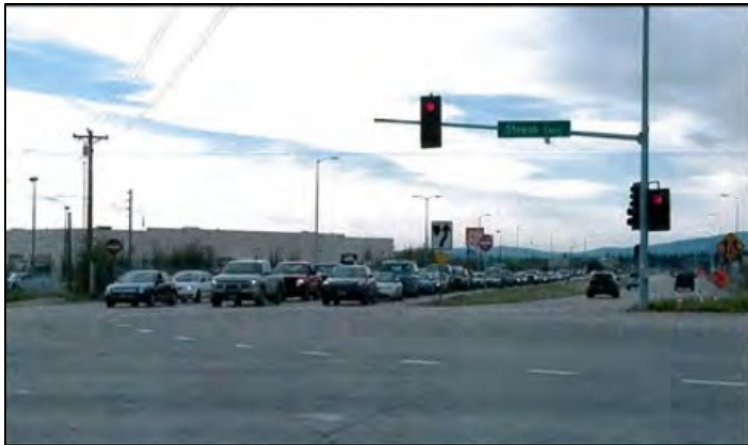
Our mission is to *Keep Alaska Moving* through service and infrastructure.

# Purpose & Need

**Purpose:** Enhance motorized and non-motorized (i.e., bicycle and pedestrian) mobility and safety at the Steese/Johansen Expressway intersection and within its influence area

## Need:

- Critical node for commercial traffic heading to the North Slope
- Substantial development has led to excessive delays
- High profile ped/bike crashes 2005 - 2014



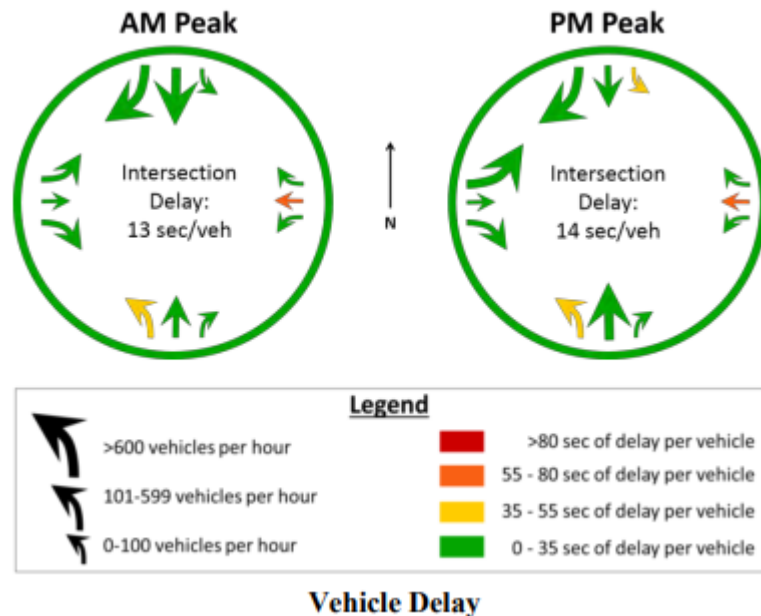


# Project Overview



The Diverging Diamond Interchange (DDI) is the **preferred build alternative** because it will:

- Move vehicles more efficiently
- Enhance local bicycle/pedestrian routes
- Provide long-term congestion and safety relief



# Existing Intersection

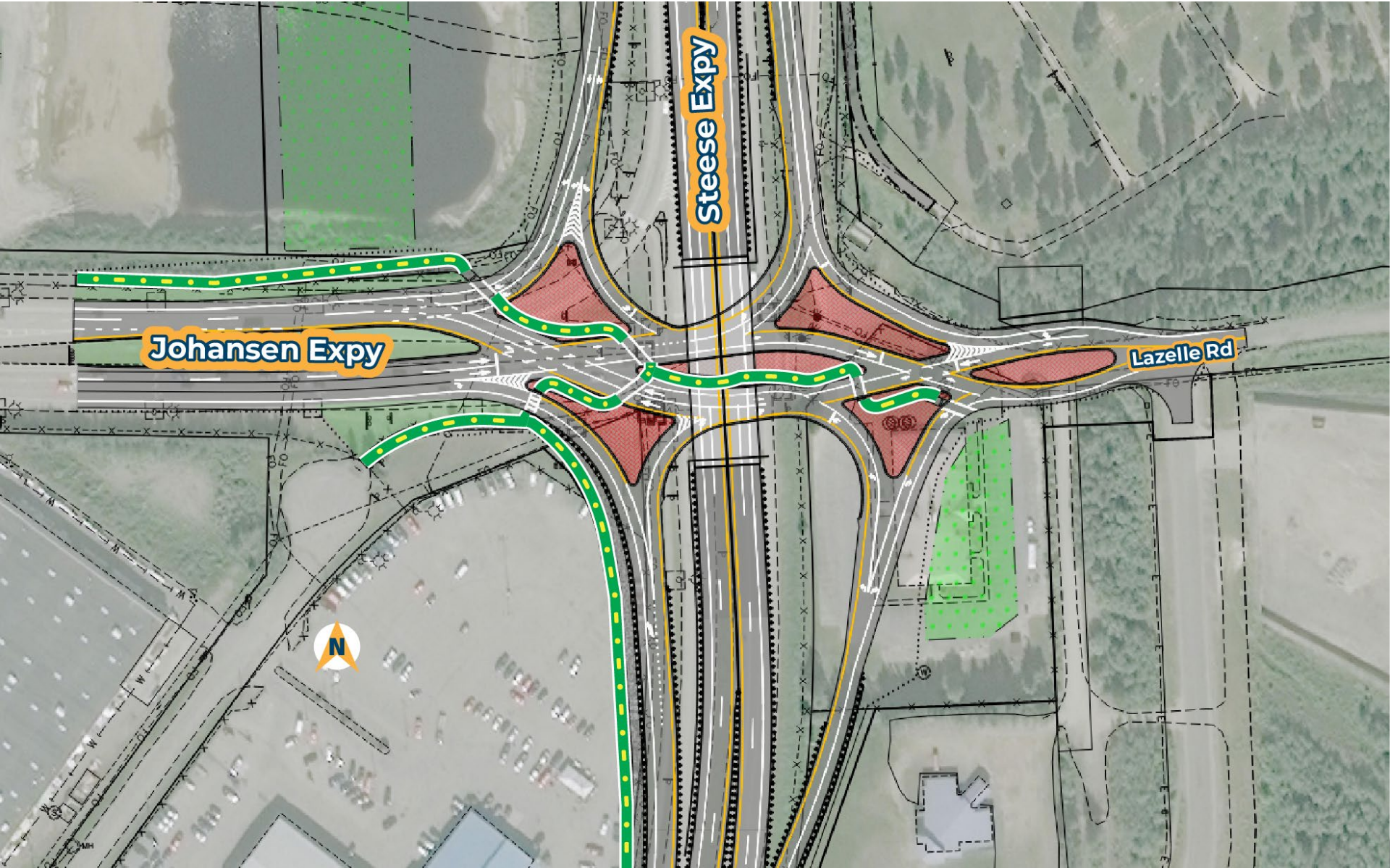


## Existing Signalized Pedestrian Crossing Delay

	Crossing leg	Pedestrian Delay (sec)
AM Peak	South	50
	East	44
	West	53
PM Peak	South	48
	East	42
	West	51

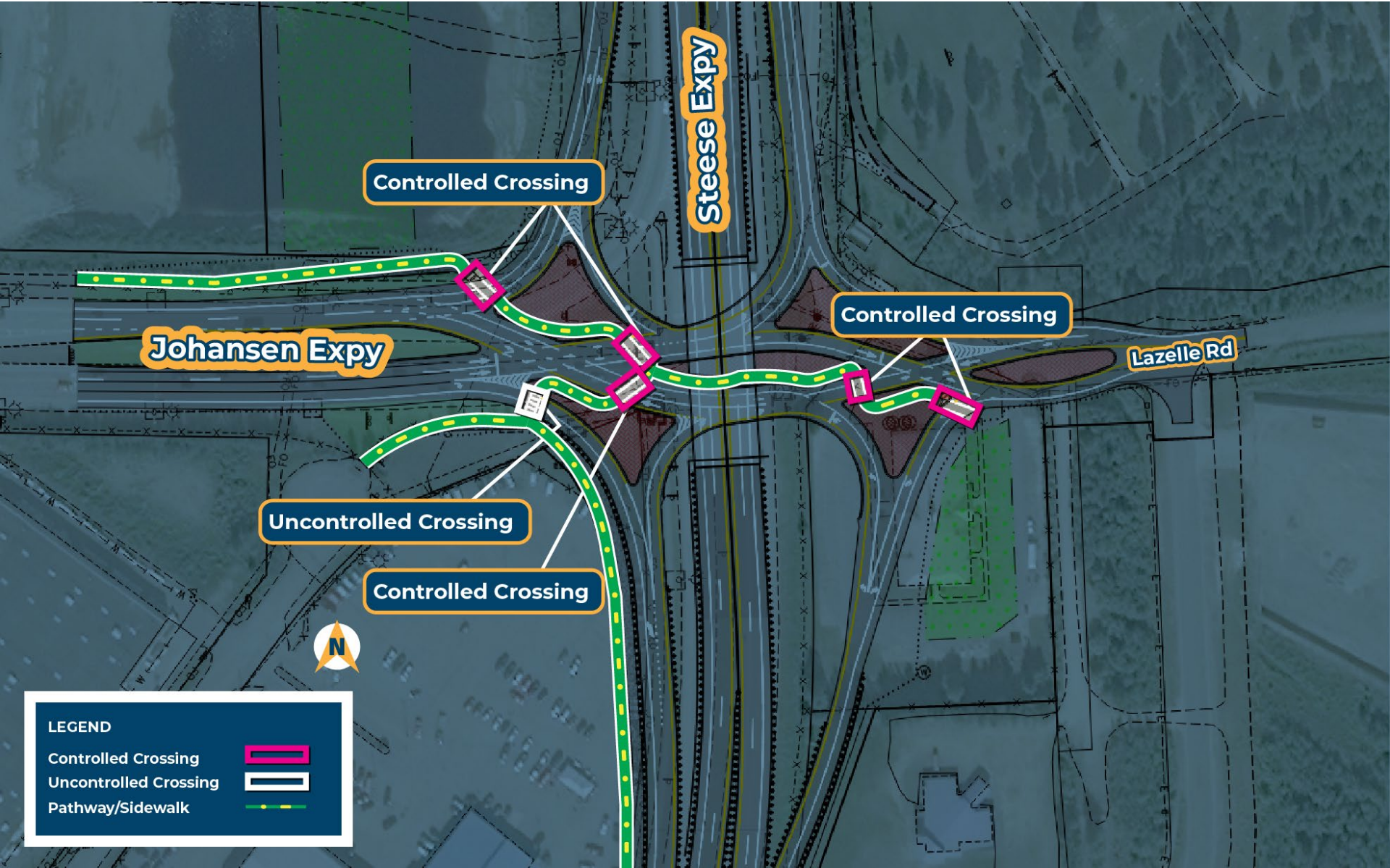


# Project Overview - DDI



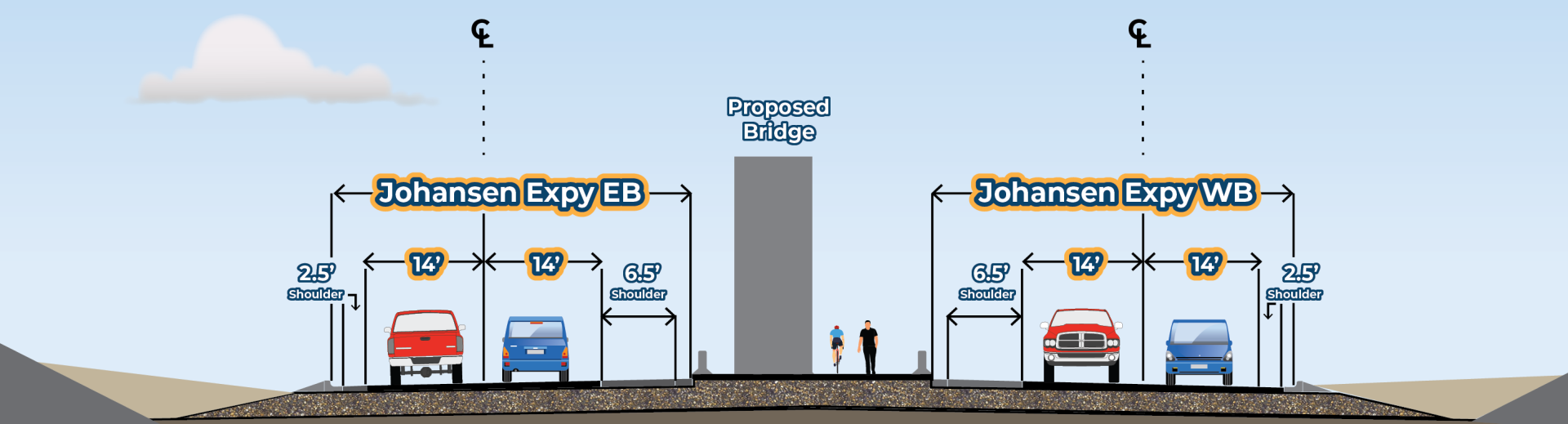
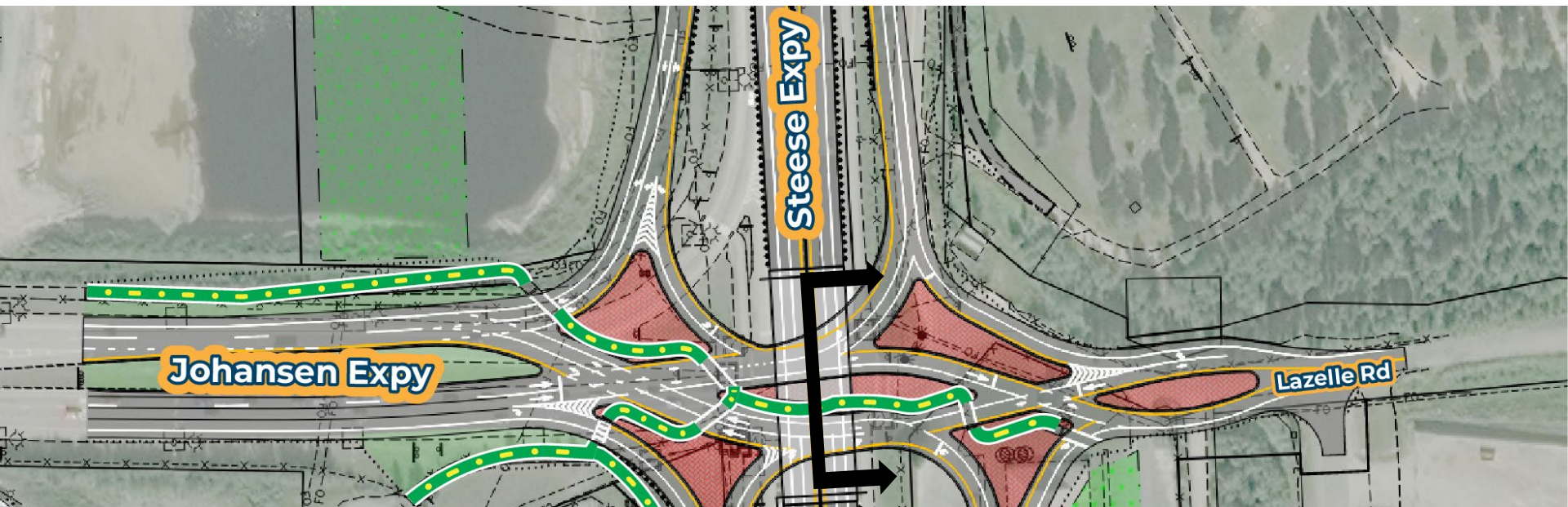


# Project Overview - DDI

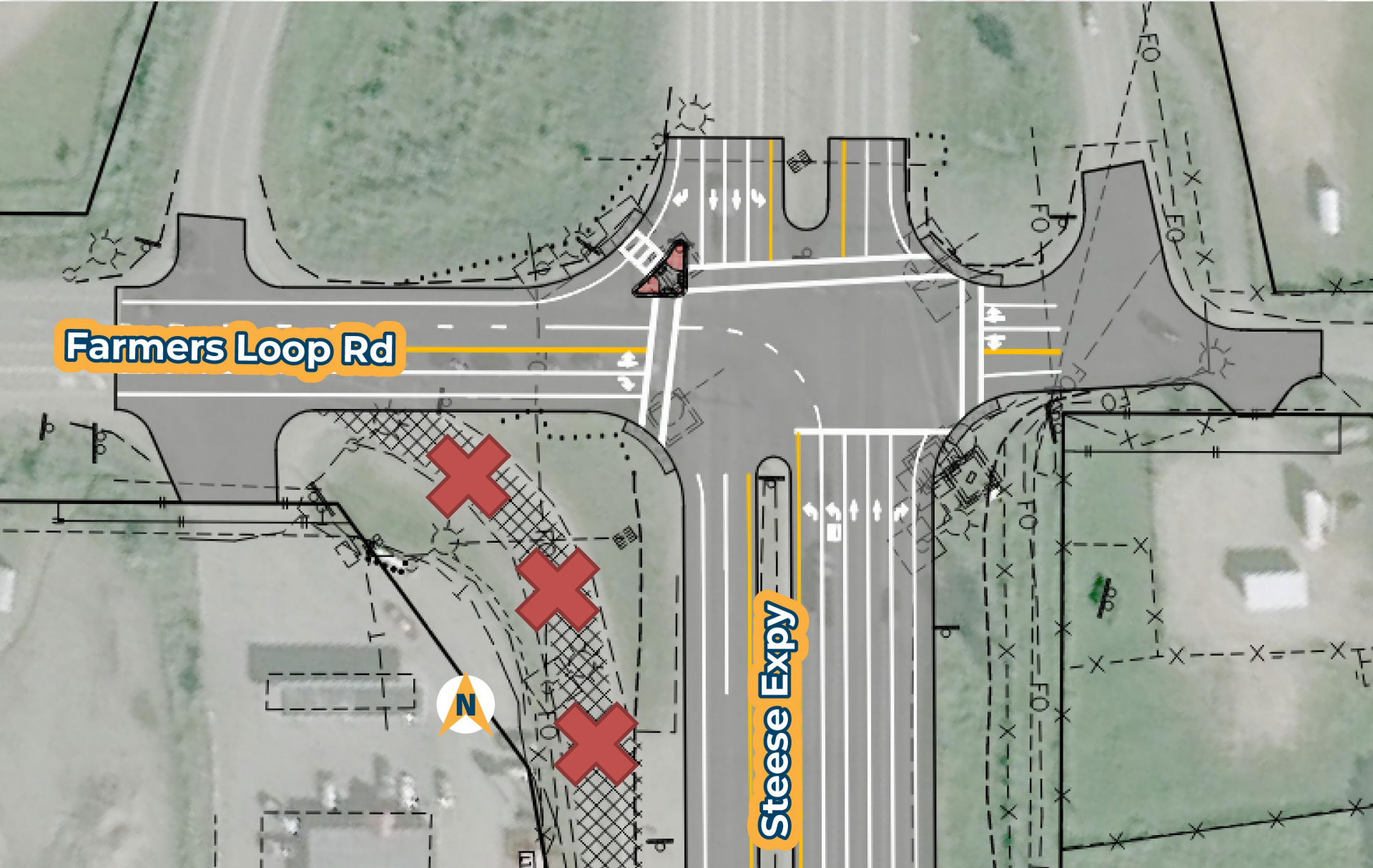




# DDI Section

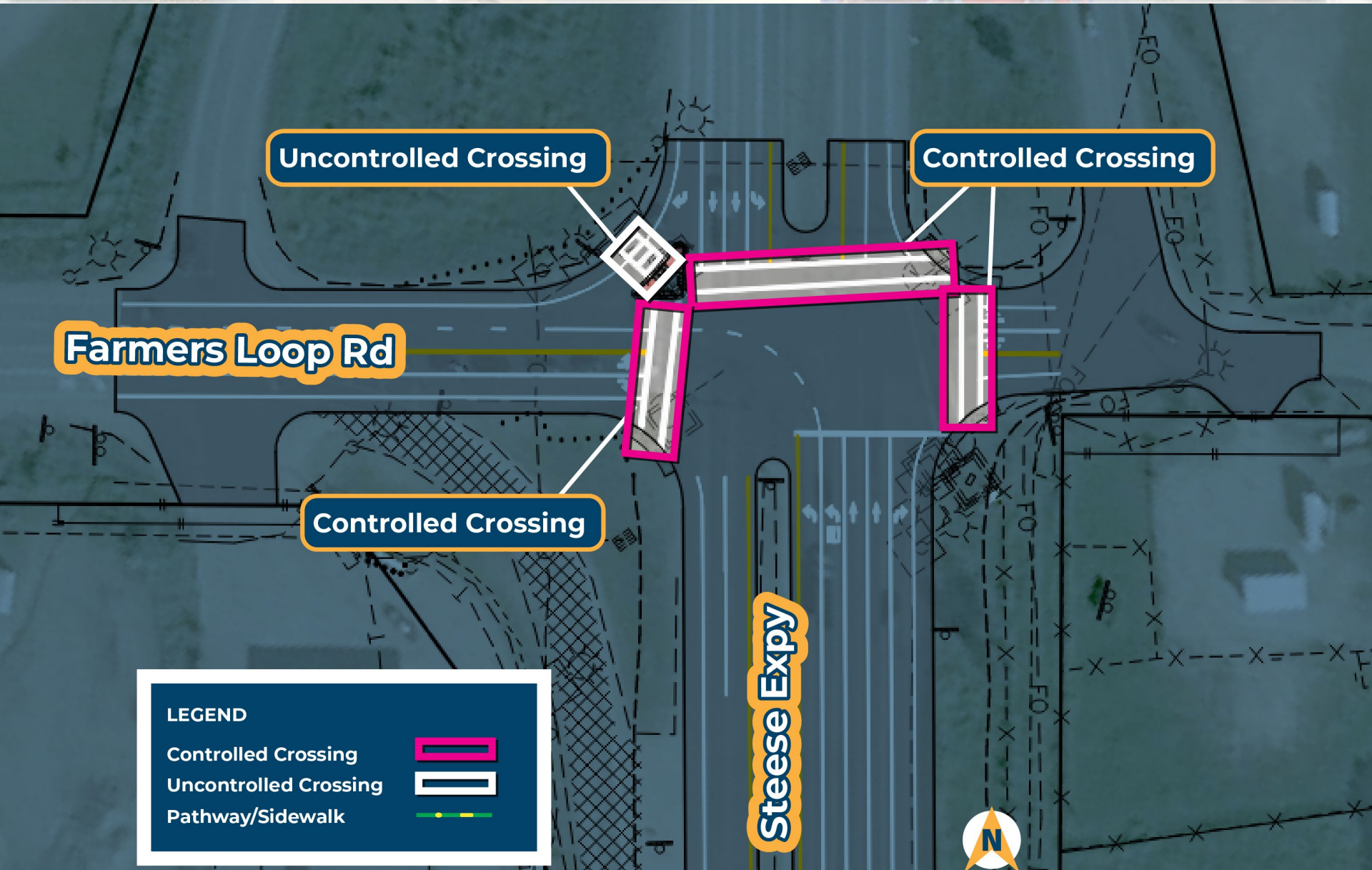


# Farmer's Loop Changes





# Farmer's Loop Changes



Uncontrolled Crossing

Controlled Crossing

Farmers Loop Rd

Controlled Crossing

Steese Expy

**LEGEND**

Controlled Crossing	
Uncontrolled Crossing	
Pathway/Sidewalk	





# What's Next?



Detailed Design

Right-of-Way Activities

Construction (2024/2026)

**DDI Design Optimization Memo**  
(Jan 2022)

**Design Study Report**  
(complete August 2022)

**85% Design Review**  
(January 2023)

**95% Design Review**  
(Late 2023)

**Appraisals**  
(Beginning late 2022)

**Negotiations & Acquisitions**

**Farmers Loop Detour Connection & Utilities**

**Interchange Construction**



# Contact Information

## Stay Informed!

### Project Manager Contact



Jenny Wright, P.E. – Project Manager  
[jenny.wright@alaska.gov](mailto:jenny.wright@alaska.gov)  
(907) 371-8949

Lauren Little, P.E. – Delivery Team  
Lead  
[lauren.little@alaska.gov](mailto:lauren.little@alaska.gov)  
(907) 378-5911

### Project Website



[https://dot.alaska.gov/nreg/  
steese-johansen/](https://dot.alaska.gov/nreg/steese-johansen/)

For individuals requiring TTY  
communications, please  
contact Alaska Relay at  
7-1-1 or 1-800-770-8973.