

- Proposed Centerline
- Eagle Nests 2014 Survey
- Bald Eagle Perch Sites (ABR 2013)
- 330ft Nest Buffer
- 660ft Nest Buffer
- Mile Post
- 264.0ft Nest Buffer
- Approximate Proposed Clearing Limits*
- Council Grounds

*Note: Approximate clearing limits shown are based on a distance of 10 feet from toe of slope. Clearing needs will vary through out the project based on topography and site conditions. Prior to construction, clearing limits would be flagged and opportunities to adjust those limits based on the presence of trees would be evaluated.

BALD EAGLE PERCH SITES

Nesting sites in 2014
Perching sites in Fall of 2013

TS 28/29/30 S, R. 56/57/58/59 E,
Copper River Meridian, Alaska



| | |
|--|-----------------------|
| STATE OF ALASKA | |
| DEPARTMENT OF TRANSPORTATION AND PUBLIC FACILITIES | |
| DOT & PF Project No. 68606 | |
| HAINES HIGHWAY | |
| MILEPOST 3.5 - 12 | |
| Haines, Alaska | |
| DATE: June 09, 2014 | FIGURE SET C (1 OF 7) |



STATE OF ALASKA
 DEPARTMENT OF TRANSPORTATION
 AND PUBLIC FACILITIES
 DOT & PF Project No. 68606
 HAINES HIGHWAY
 MILEPOST 3.5 - 25.3
 Haines, Alaska

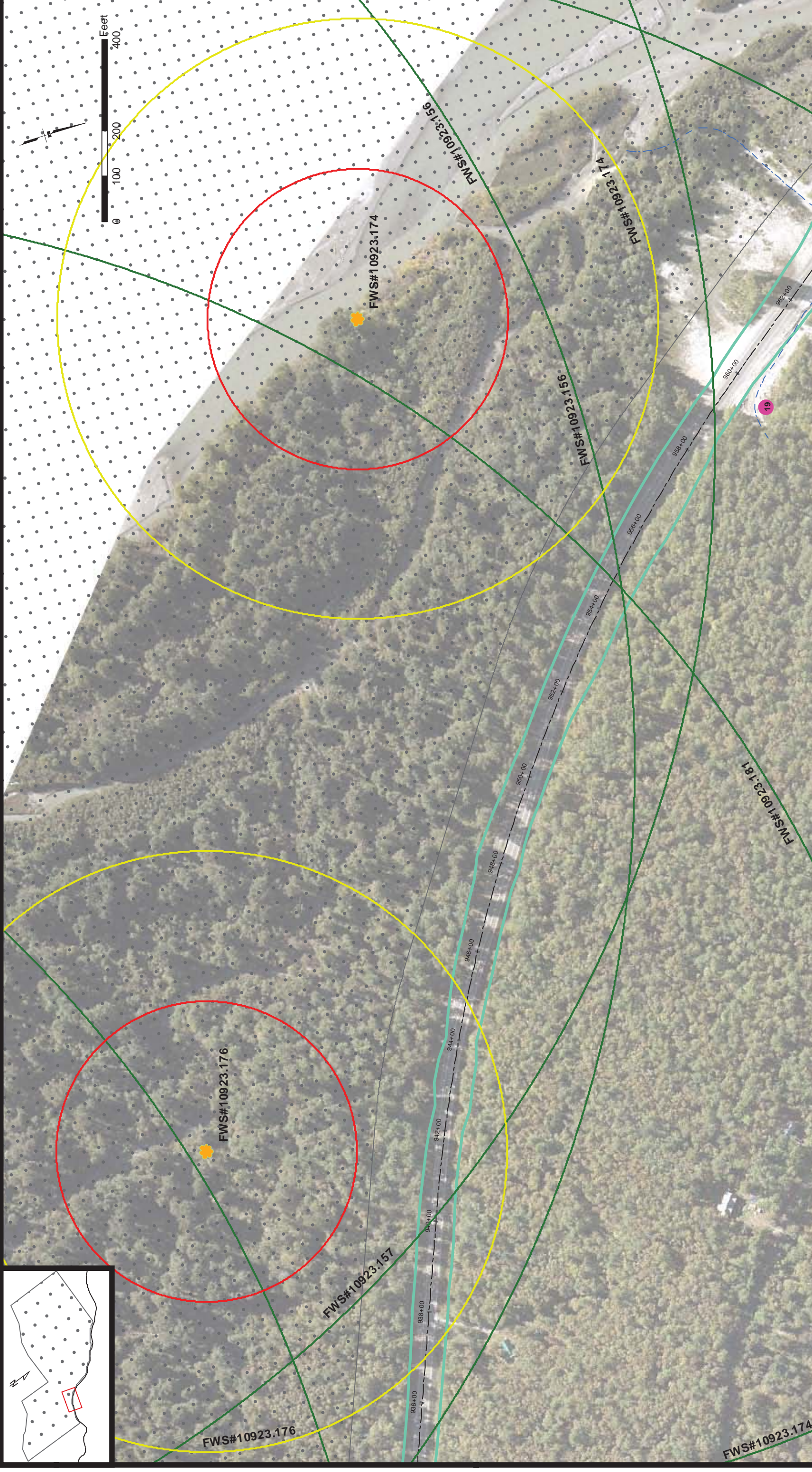


BALD EAGLE PERCH SITES
 Nesting sites in 2014
 Perching sites in Fall of 2013
 TS 28/29/30 S, R. 56/57/58/59 E,
 Copper River Meridian, Alaska

| | | | |
|--|---------------------------------------|--|-----------------------------------|
| | Proposed Centerline | | Eagle Nests 2014 Survey |
| | Approximate Proposed Clearing Limits* | | Bald Eagle Perch Sites (ABR 2013) |
| | Mile Post | | 660ft Nest Buffer |
| | Stream ID Number | | 2640ft Nest Buffer |
| | Council Grounds | | |

*Note: Approximate clearing limits shown are based on a distance of 10 feet from toe of slope. Clearing needs will vary throughout the project based on topography and site conditions. Prior to construction, clearing limits would be flagged and opportunities to adjust those limits based on the presence of trees would be evaluated.

P:\Projects\159119\GIS\ENVI\ROW\Figure Set C\Perched Bald Eagles ABR Update.mxd Jun 09, 2014 8:09:53 AM User: charrington



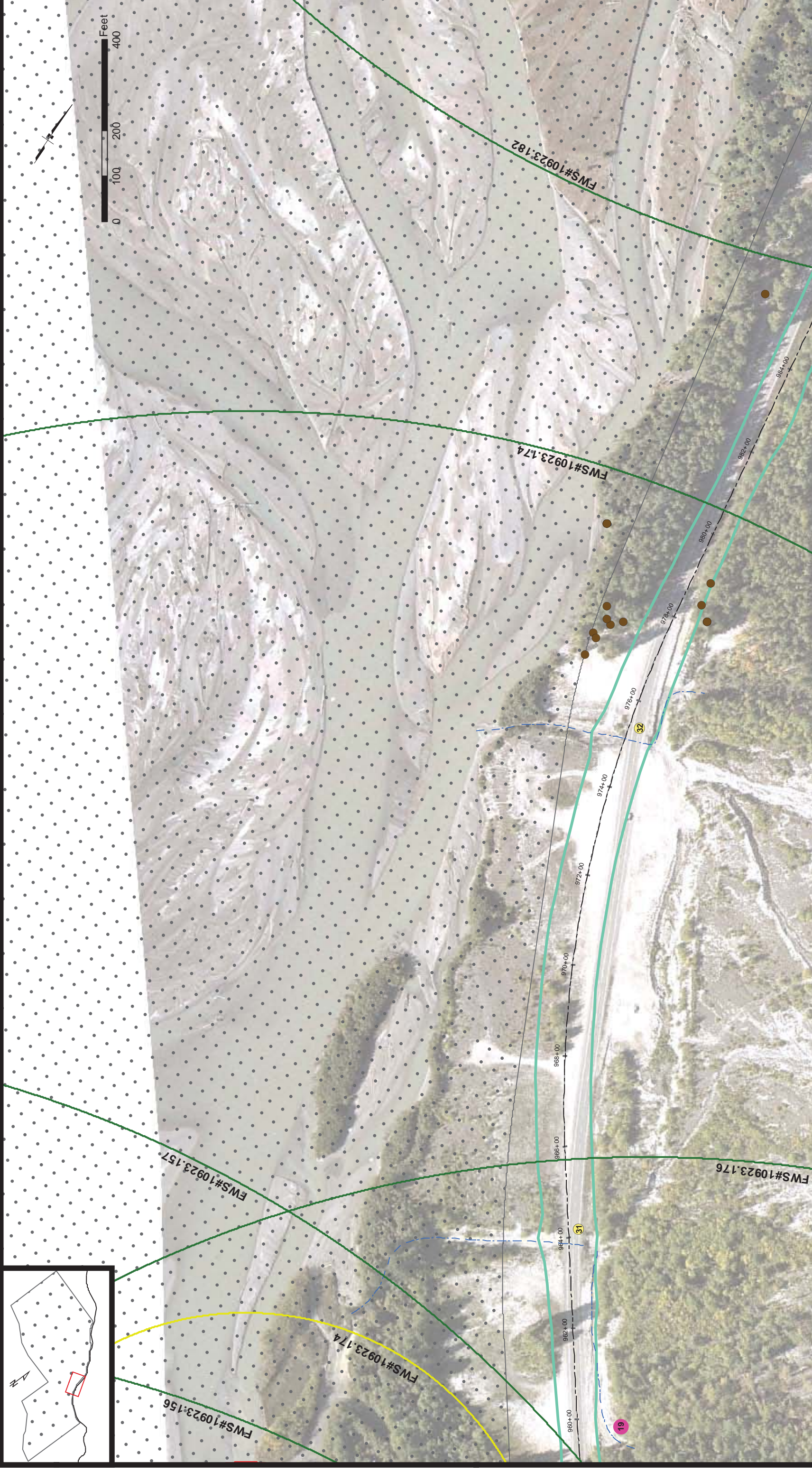
STATE OF ALASKA
 DEPARTMENT OF TRANSPORTATION
 AND PUBLIC FACILITIES
 DOT & PF Project No. 68606
 HAINES HIGHWAY
 MILEPOST 3.5 - 25.3
 Haines, Alaska



BALD EAGLE PERCH SITES
 Nesting sites in 2014
 Perching sites in Fall of 2013
 TS 28/29/30 S, R. 56/57/58/59 E,
 Copper River Meridian, Alaska

| | | | |
|--|---------------------------------------|--|-------------------------|
| | Proposed Centerline | | Eagle Nests 2014 Survey |
| | Approximate Proposed Clearing Limits* | | 330 ft Nest Buffer |
| | Mile Post | | 660 ft Nest Buffer |
| | Stream ID Number | | 2640 ft Nest Buffer |
| | Council Grounds | | |

*Note: Approximate clearing limits shown are based on a distance of 10 feet from toe of slope. Clearing needs will vary through out the project based on topography and site conditions. Prior to construction, clearing limits would be flagged and opportunities to adjust those limits based on the presence of trees would be evaluated.



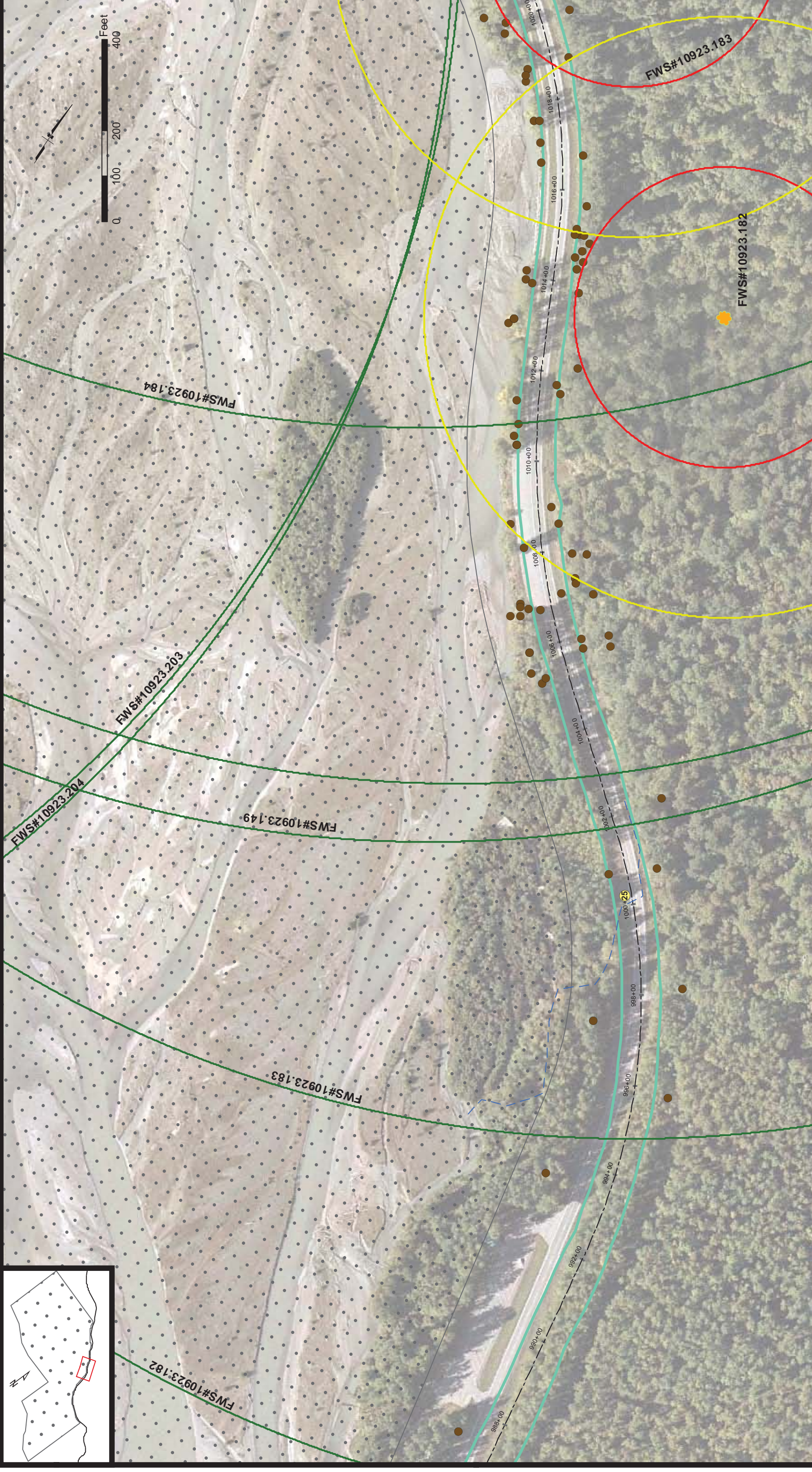
STATE OF ALASKA
 DEPARTMENT OF TRANSPORTATION
 AND PUBLIC FACILITIES
 DOT & PF Project No. 68606
 HAINES HIGHWAY
 MILEPOST 3.5 - 25.3
 Haines, Alaska



BALD EAGLE PERCH SITES
 Nesting sites in 2014
 Perching sites in Fall of 2013
 TS 28/29/30 S, R. 56/57/58/59 E,
 Copper River Meridian, Alaska

- Proposed Centerline
- Eagle Nests 2014 Survey
- Approximate Proposed Clearing Limits*
- Bald Eagle Perch Sites (ABR 2013)
- 330ft Nest Buffer
- 660ft Nest Buffer
- 2640ft Nest Buffer
- Mile Post
- Stream ID Number
- Council Grounds

*Note: Approximate clearing limits shown are based on a distance of 10 feet from toe of slope. Clearing needs will vary through out the project based on topography and site conditions. Prior to construction, clearing limits would be flagged and opportunities to adjust those limits based on the presence of trees would be evaluated.



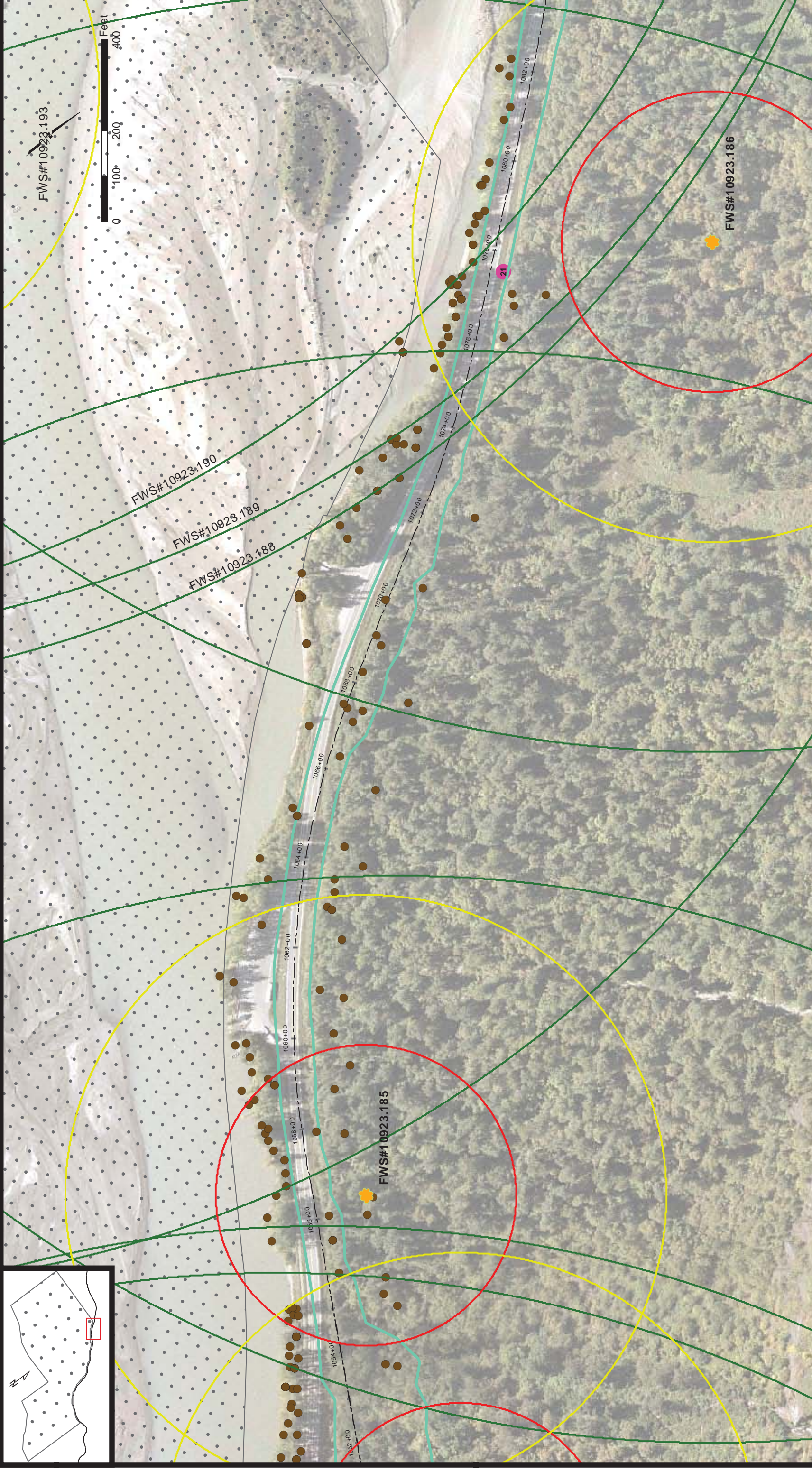
STATE OF ALASKA
DEPARTMENT OF TRANSPORTATION
AND PUBLIC FACILITIES
 DOT & PF Project No. 68606
 HAINES HIGHWAY
 MILEPOST 3.5 - 25.3
 Haines, Alaska



BALD EAGLE PERCH SITES
 Nesting sites in 2014
 Perching sites in Fall of 2013
 TS 28/29/30 S, R. 56/57/58/59 E,
 Copper River Meridian, Alaska

| | | | |
|--|---------------------------------------|--|-----------------------------------|
| | Proposed Centerline | | Eagle Nests 2014 Survey |
| | Approximate Proposed Clearing Limits* | | Bald Eagle Perch Sites (ABR 2013) |
| | Mile Post | | 330ft Nest Buffer |
| | Stream ID Number | | 660ft Nest Buffer |
| | Council Grounds | | 264ft Nest Buffer |

*Note: Approximate clearing limits shown are based on a distance of 10 feet from toe of slope. Clearing needs will vary throughout the project based on topography and site conditions. Prior to construction, clearing limits would be flagged and opportunities to adjust those limits based on the presence of trees would be evaluated.



STATE OF ALASKA
 DEPARTMENT OF TRANSPORTATION
 AND PUBLIC FACILITIES
 DOT & PF Project No. 68606
 HAINES HIGHWAY
 MILEPOST 3.5 - 25.3
 Haines, Alaska



BALD EAGLE PERCH SITES
 Nesting sites in 2014
 Perching sites in Fall of 2013
 TS 28/29/30 S, R. 56/57/58/59 E,
 Copper River Meridian, Alaska

| | | | |
|--|---------------------------------------|--|-----------------------------------|
| | Proposed Centerline | | Eagle Nests 2014 Survey |
| | Approximate Proposed Clearing Limits* | | Bald Eagle Perch Sites (ABR 2013) |
| | Mile Post | | 330ft Nest Buffer |
| | Stream ID Number | | 660ft Nest Buffer |
| | Council Grounds | | 2640ft Nest Buffer |

*Note: Approximate clearing limits shown are based on a distance of 10 feet from toe of slope. Clearing needs will vary throughout the project based on topography and site conditions. Prior to construction, clearing limits would be flagged and opportunities to adjust those limits based on the presence of trees would be evaluated.