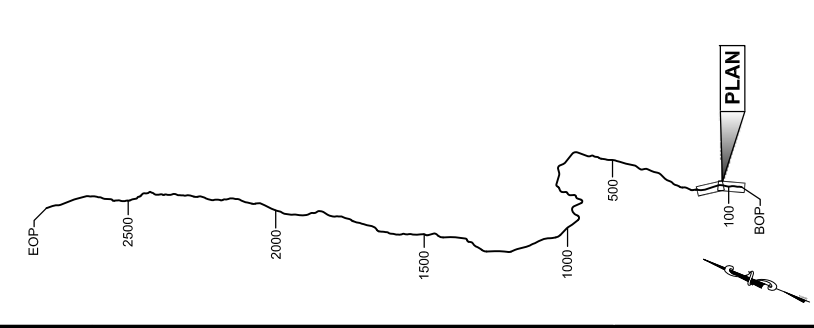


Attachment A
Juneau Access Improvements Project
Revised East Lynn Canal Plan and Profile Sheets

This page intentionally left blank.

GEARY, NATE (DOT)
TAB: EL1.Pfile.dwg, October 04, 2013 12:28:15 PM
APPENDIX NUMBER
ATTACHMENT NUMBER

RECORD OF REVISIONS	
No.	DESCRIPTION



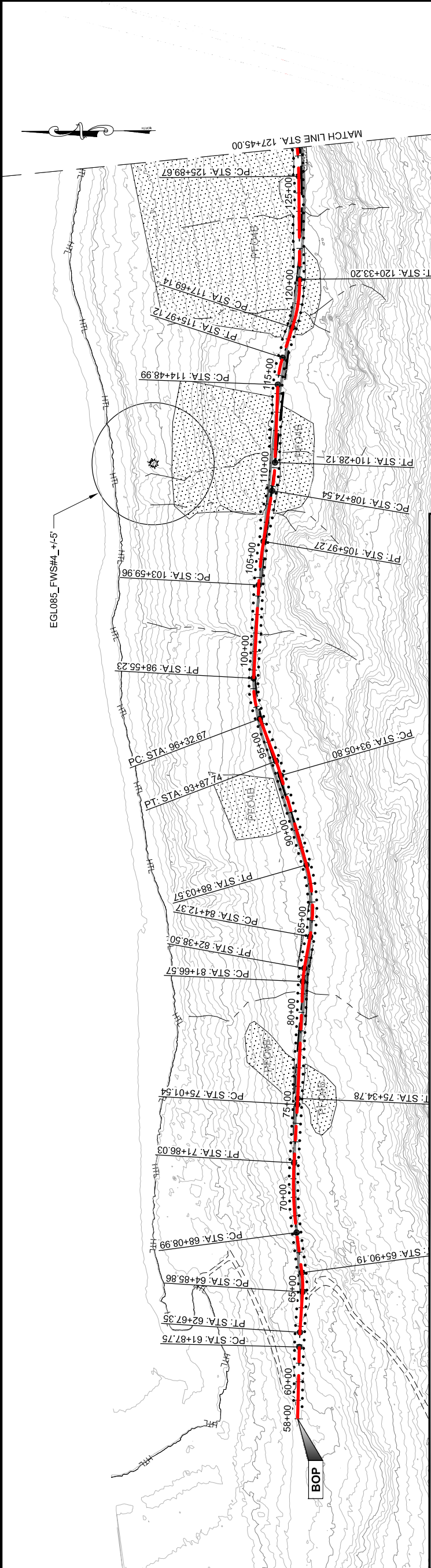
CHECKED BY:

DESIGNED BY:
DRAWN BY:

STATE OF ALASKA
DEPARTMENT OF TRANSPORTATION
& PUBLIC FACILITIES
SOUTHEAST REGION

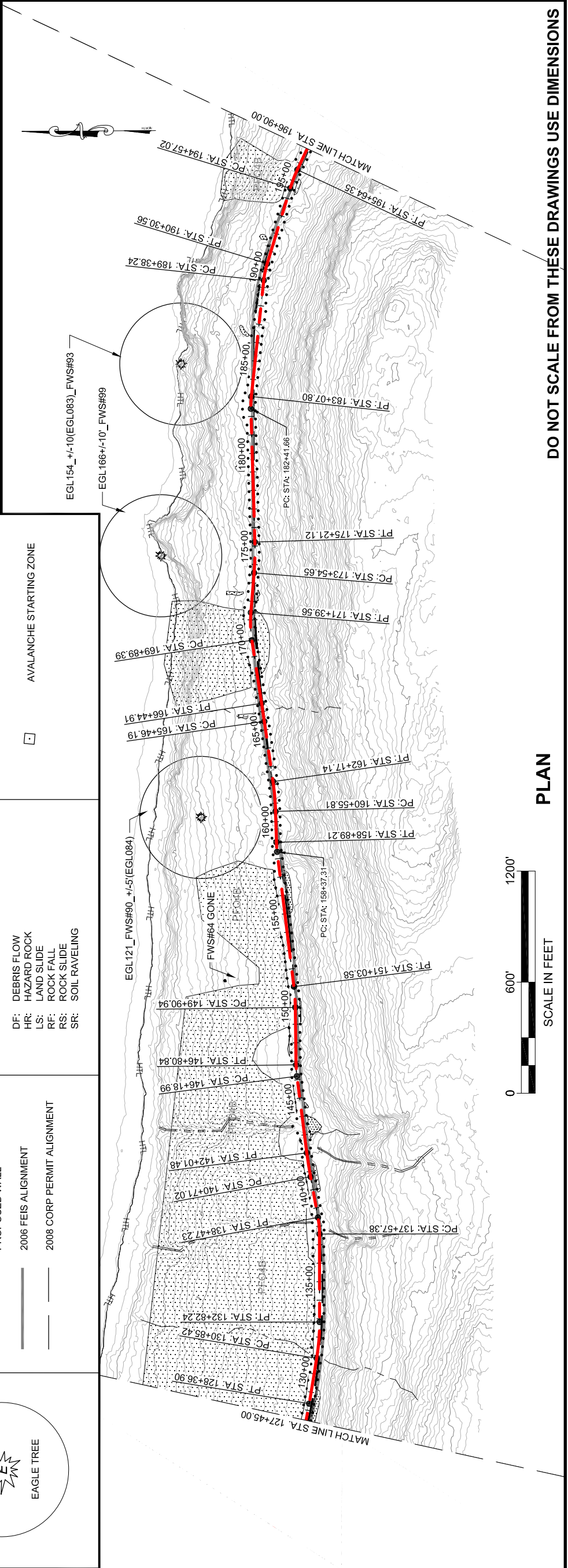
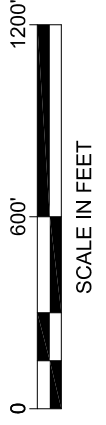
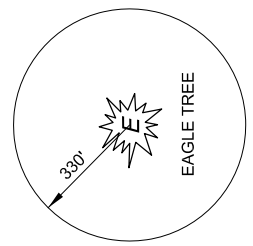
2013 EIS PLAN VIEW

PROJECT DESIGNATION	71100
STATE	ALASKA
YEAR	2013
SHEET NUMBER	EL1
TOTAL SHEETS	38



LEGEND

	CURRENT ALIGNMENT
	PROPOSED FILL SLOPE
	PROPOSED CUT SLOPE
	PROPOSED WALL
	2006 FEIS ALIGNMENT
	2008 CORP PERMIT ALIGNMENT
	BRIDGES
	WETLAND
	AVALANCHE CHUTE
	AVALANCHE STARTING ZONE



PLAN

DO NOT SCALE FROM THESE DRAWINGS USE DIMENSIONS

This page intentionally left blank.

PATH: C:\UNITS\10\DR10-2013 EIS DWG\SR7100_2013 EIS
 EAST LYNN PLANS.DWG

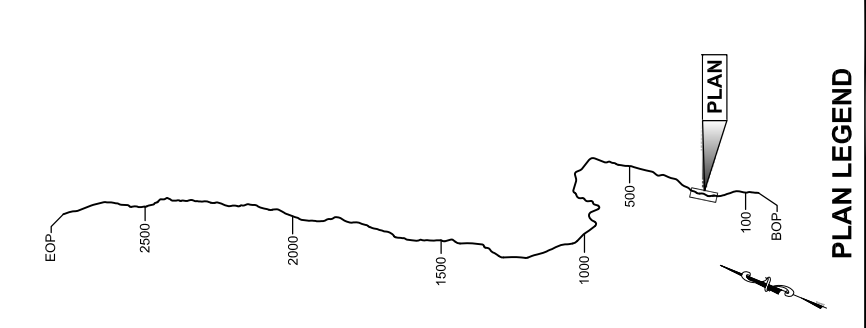
GEARY, NATE (DOT)
 TAB: EL2\Friday, October 04, 2013 12:38:48 PM

APPENDUM NUMBER

ATTACHMENT NUMBER

RECORD OF REVISIONS

NO.	DATE	DESCRIPTION



DESIGNED BY:

DRAWN BY:

STATE OF ALASKA
 DEPARTMENT OF TRANSPORTATION
 & PUBLIC FACILITIES
 SOUTHEAST REGION

JNU-EAST LYNN CANAL
 HIGHWAY ALTERNATIVE 2B
 PROJECT #71100

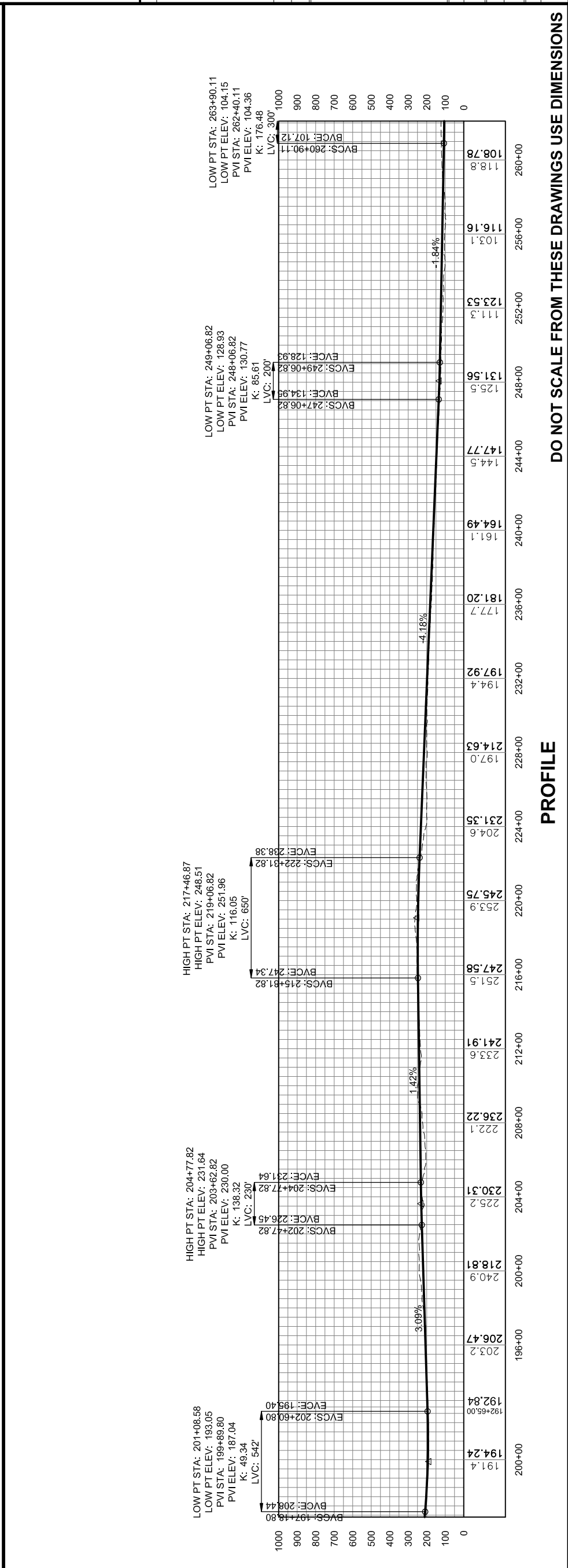
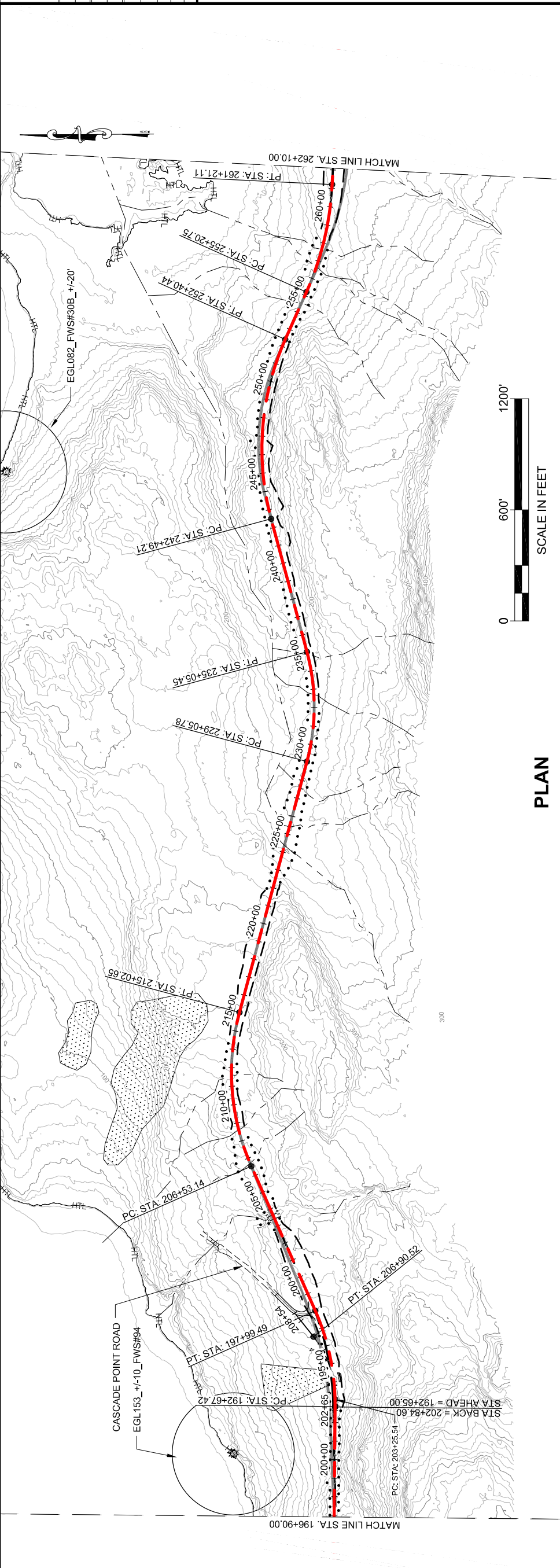
**2013 EIS
 PLAN VIEW**

PROJECT DESIGNATION
71100

STATE	YEAR
ALASKA	2013

SHEET NUMBER
EL2

TOTAL SHEETS
38



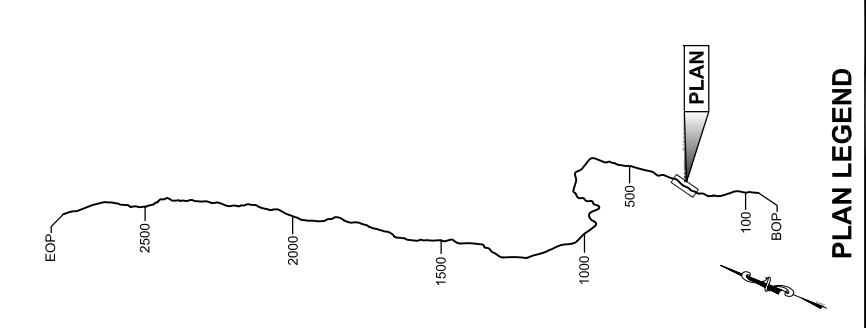
This page intentionally left blank.

PATH: C:\UNITS\10\ORDER\10-2012 EIS DWGSET\7100_2013 EIS
 EAST LYNN PLANS.DWG

GEARY, NATE (DOT)
 TAB: EL3 Friday, October 04, 2013 12:46:17 PM

APPENDUM NUMBER	ATTACHMENT NUMBER

RECORD OF REVISIONS		
NO.	DATE	DESCRIPTION



**2013 EIS
 PLAN VIEW**

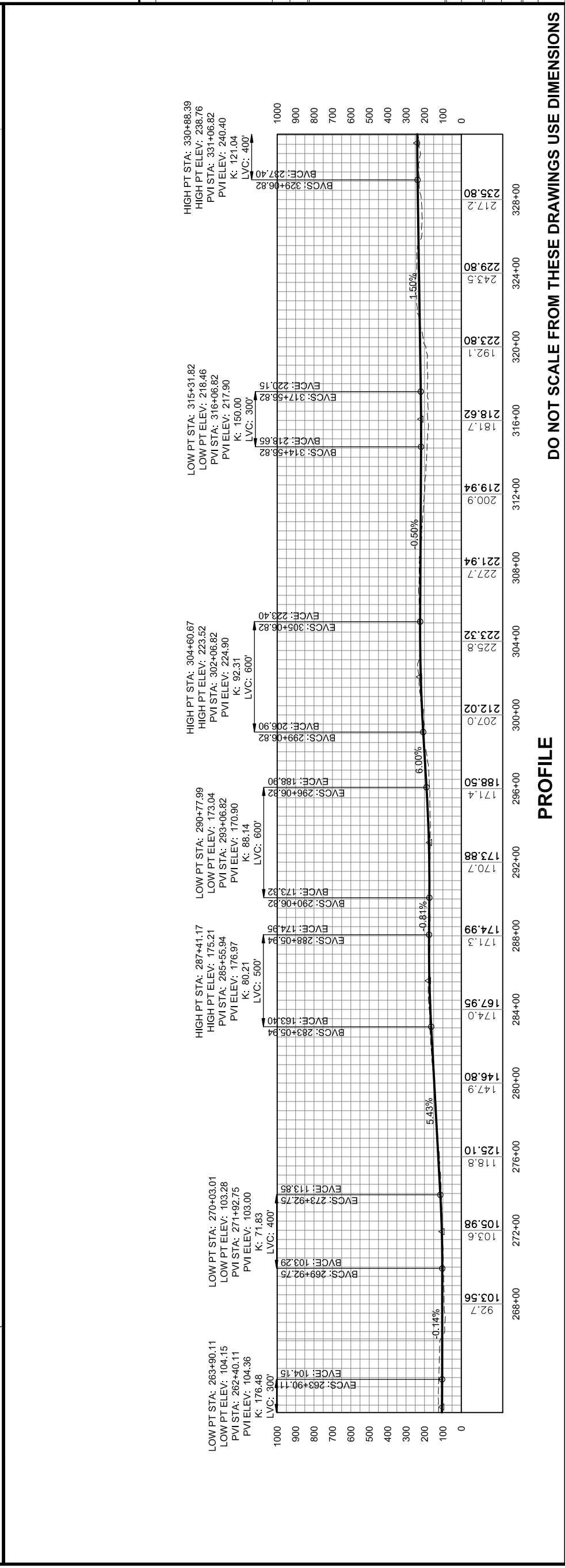
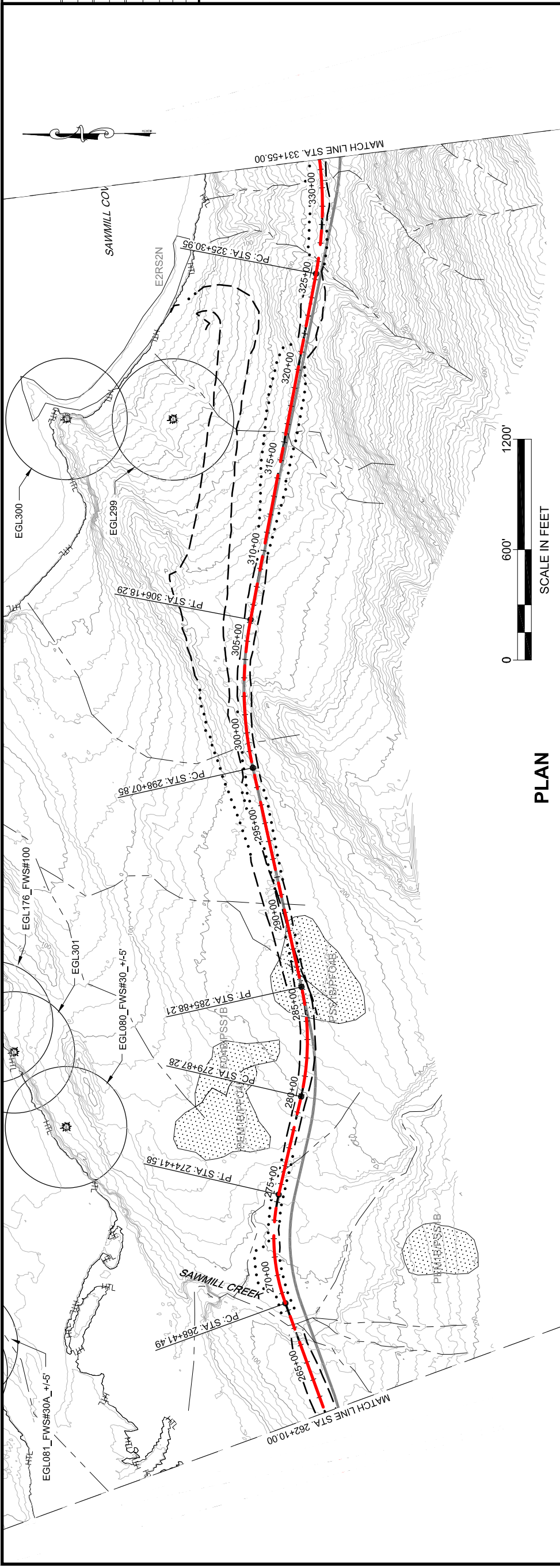
PROJECT DESIGNATION
71100

STATE	YEAR
ALASKA	2013

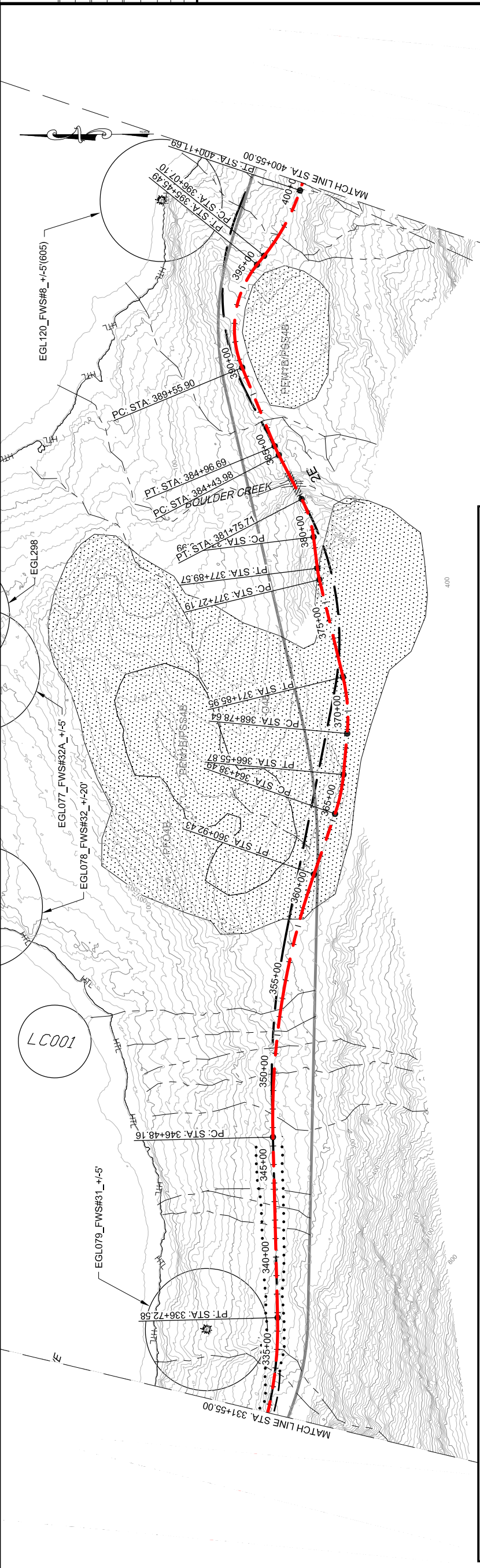
SHEET NUMBER **EL3** TOTAL SHEETS **38**

DESIGNED BY:
 DRAWN BY:
 STATE OF ALASKA
 DEPARTMENT OF TRANSPORTATION
 & PUBLIC FACILITIES
 SOUTHEAST REGION

**JNU-EAST LYNN CANAL
 HIGHWAY ALTERNATIVE 2B
 PROJECT #71100**



This page intentionally left blank.



LEGEND

<ul style="list-style-type: none"> CURRENT ALIGNMENT PROPOSED FILL SLOPE PROPOSED CUT SLOPE PROPOSED WALL 2006 FEIS ALIGNMENT 2008 CORP PERMIT ALIGNMENT 	<ul style="list-style-type: none"> BRIDGES WETLAND 	<h4 style="text-align: center;">GEO HAZARD AREA LEGEND</h4> <ul style="list-style-type: none"> DF: DEBRIS FLOW HR: HAZARD ROCK LS: LAND SLIDE RF: ROCK FALL RS: ROCK SLIDE SR: SOIL RAVELING
--	--	--

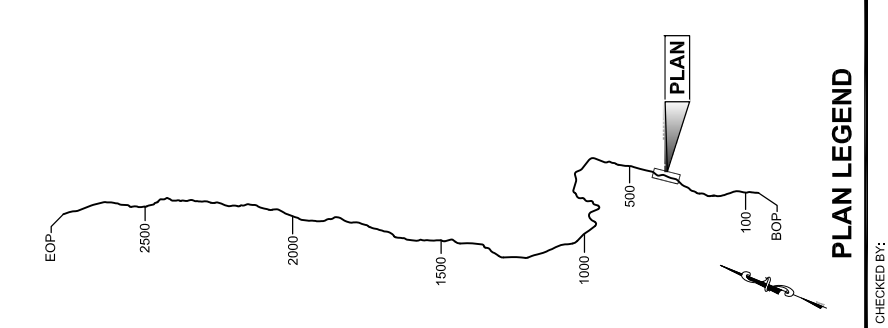
EAGLE TREE

1007

AVAILANCHE STARTING ZONE

1007

1007



PLAN LEGEND

CHECKED BY:

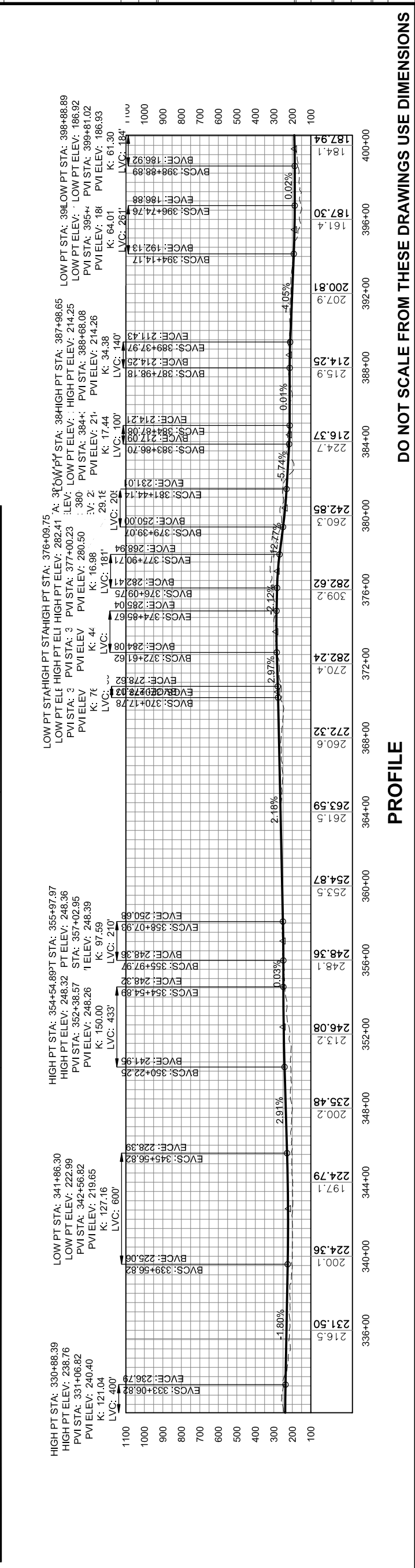
DRAFT

DESIGNED BY:
 DRAWN BY:

STATE OF ALASKA
 DEPARTMENT OF TRANSPORTATION
 & PUBLIC FACILITIES
 SOUTHEAST REGION

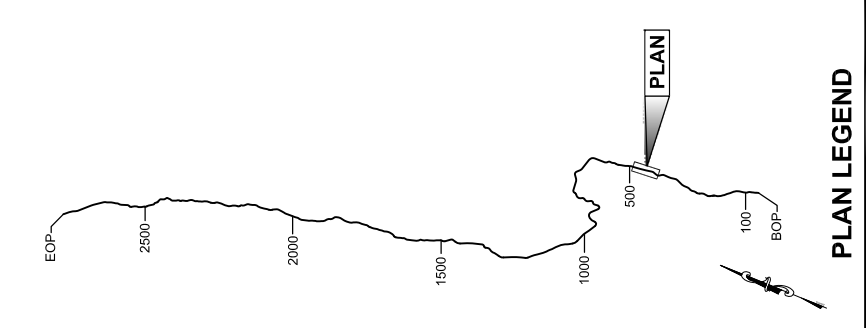
**JNU-EAST LYNN CANAL
 HIGHWAY ALTERNATIVE 2B
 PROJECT #71100**

2013 EIS PLAN VIEW	
PROJECT DESIGNATION	
STATE	71100
YEAR	2013
ALASKA	TOTAL SHEETS
SHEET NUMBER	EL4
TOTAL SHEETS	38



This page intentionally left blank.

PATH: C:\UNITS\10\DRS\10-2013 EIS DWGSET\100_2013 EIS
 GEARY, NATE (DOT)
 TAB: ELS\Friday, October 04, 2013 12:14:24 PM
 APPENDUM NUMBER
 ATTACHMENT NUMBER
 RECORD OF REVISIONS
 DATE DESCRIPTION



PLAN LEGEND

CHECKED BY:

DESIGNED BY:

DRAWN BY:

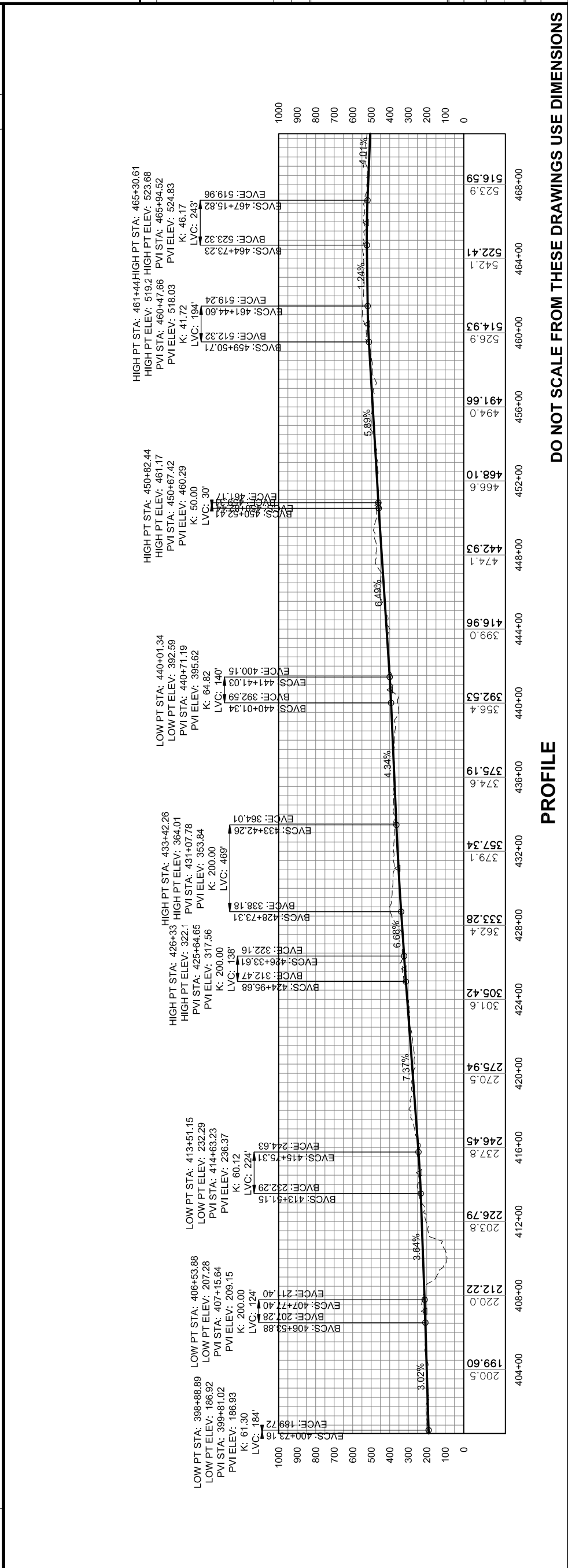
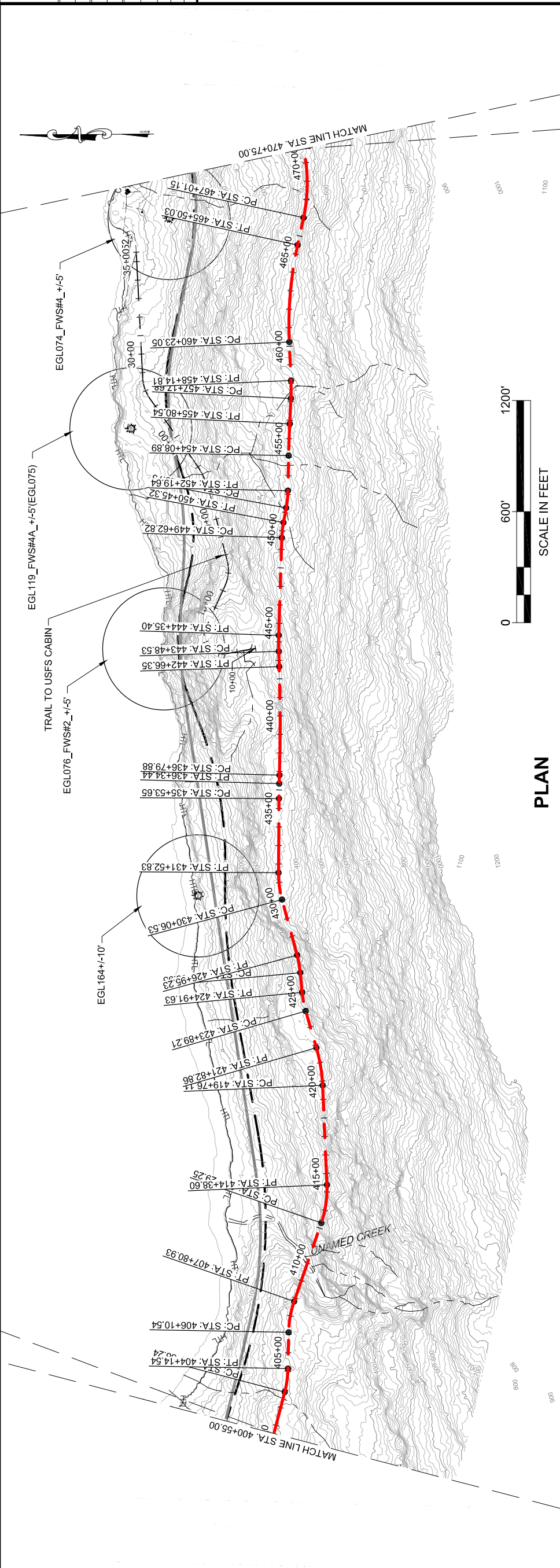
STATE OF ALASKA
 DEPARTMENT OF TRANSPORTATION
 & PUBLIC FACILITIES
 SOUTHEAST REGION

**JNU-EAST LYNN CANAL
 HIGHWAY ALTERNATIVE 2B
 PROJECT #71100**

**2013 EIS
 PLAN VIEW**

PROJECT DESIGNATION
71100

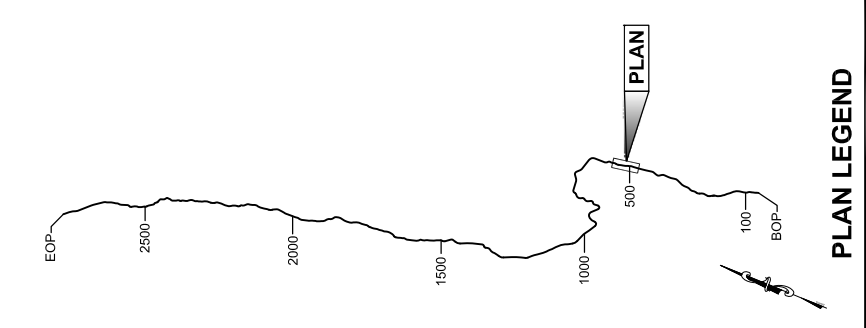
STATE	ALASKA
YEAR	2013
SHEET NUMBER	EL5
TOTAL SHEETS	38



PROFILE

DO NOT SCALE FROM THESE DRAWINGS USE DIMENSIONS

This page intentionally left blank.



CHECKED BY:

DESIGNED BY:

DRAWN BY:

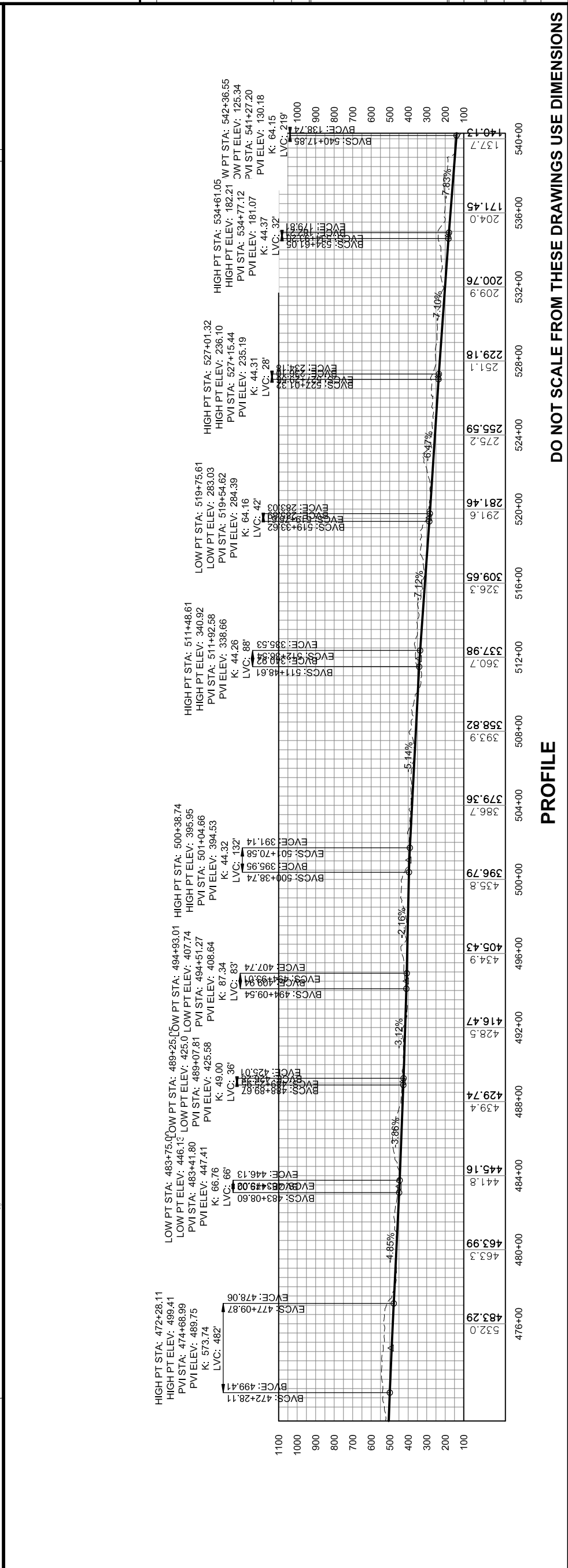
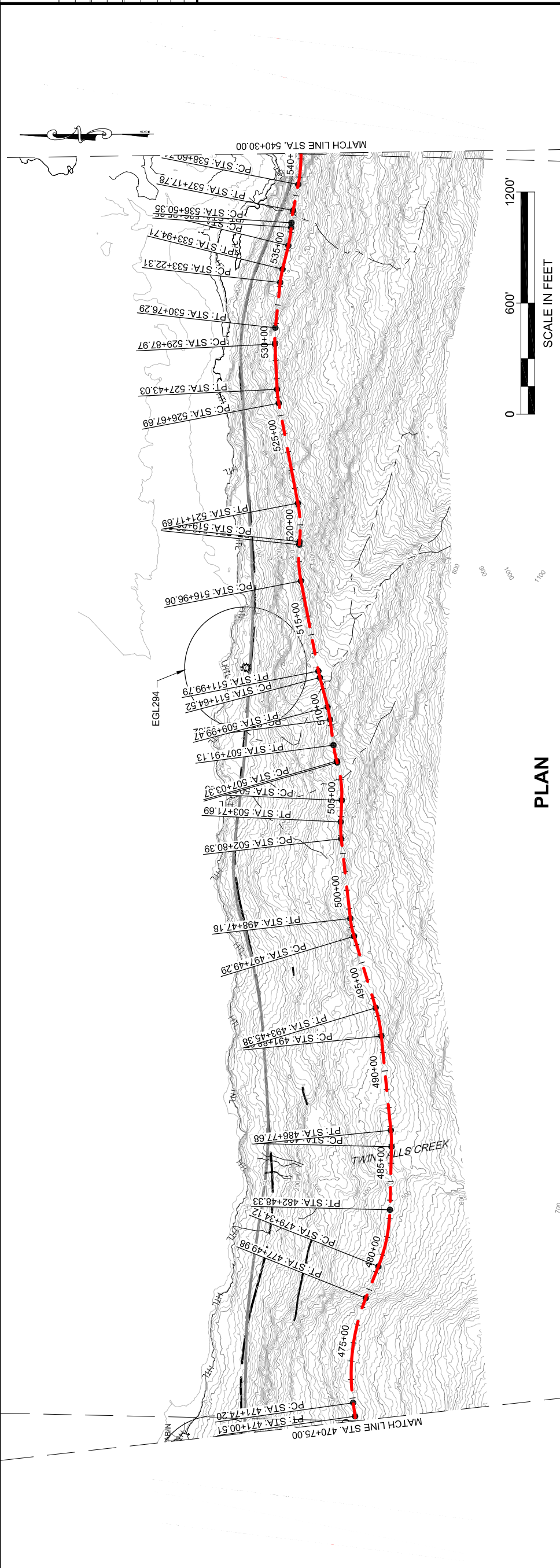
STATE OF ALASKA
 DEPARTMENT OF TRANSPORTATION
 & PUBLIC FACILITIES
 SOUTHEAST REGION

**JNU-EAST LYNN CANAL
 HIGHWAY ALTERNATIVE 2B
 PROJECT #71100**

**2013 EIS
 PLAN VIEW**

PROJECT DESIGNATION
71100

STATE	ALASKA
YEAR	2013
SHEET NUMBER	EL6
TOTAL SHEETS	38

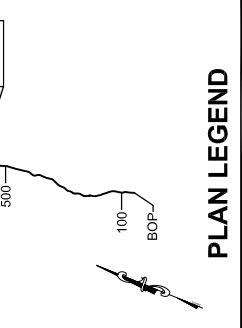
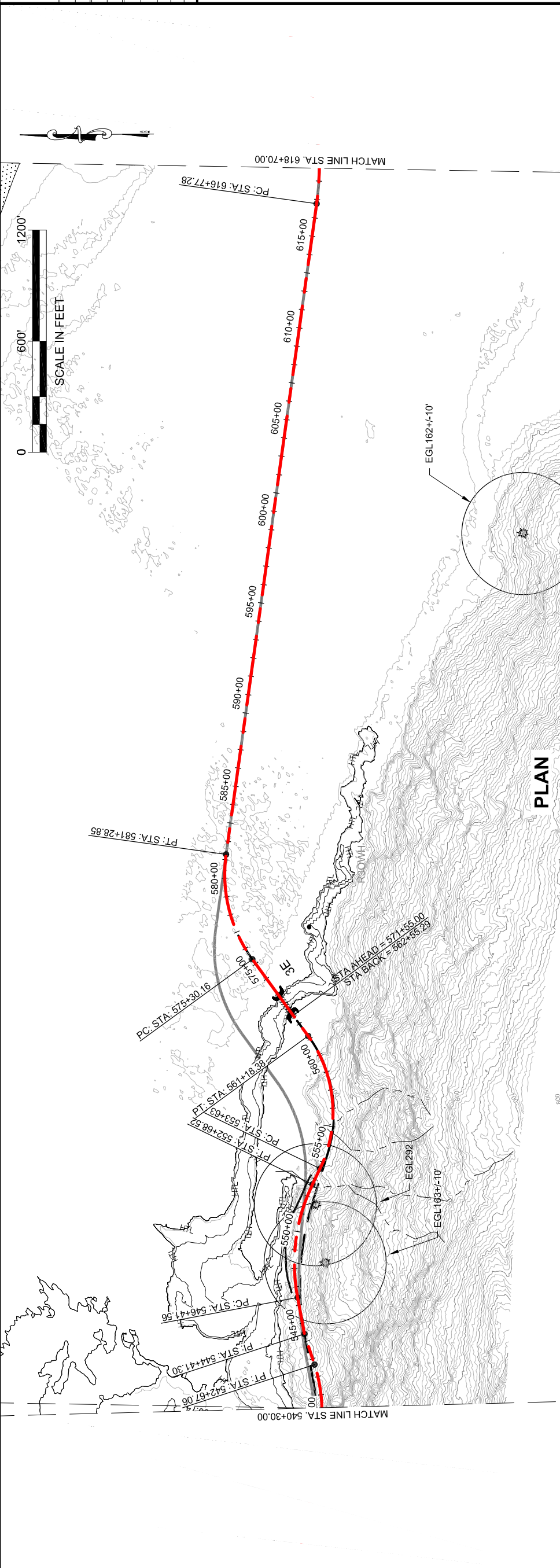


This page intentionally left blank.

PATH: C:\UNL\71100\810\2013 EIS DWGSET\71100_2013 EIS
 GEARY, NATE (DOT)
 TAB: EL7Friday, October 04, 2013 12:42:24 PM

RECORD OF REVISIONS		
NO.	DATE	DESCRIPTION

APPENDIX NUMBER
 ATTACHMENT NUMBER



DRAFT

DESIGNED BY:
 DRAWN BY:

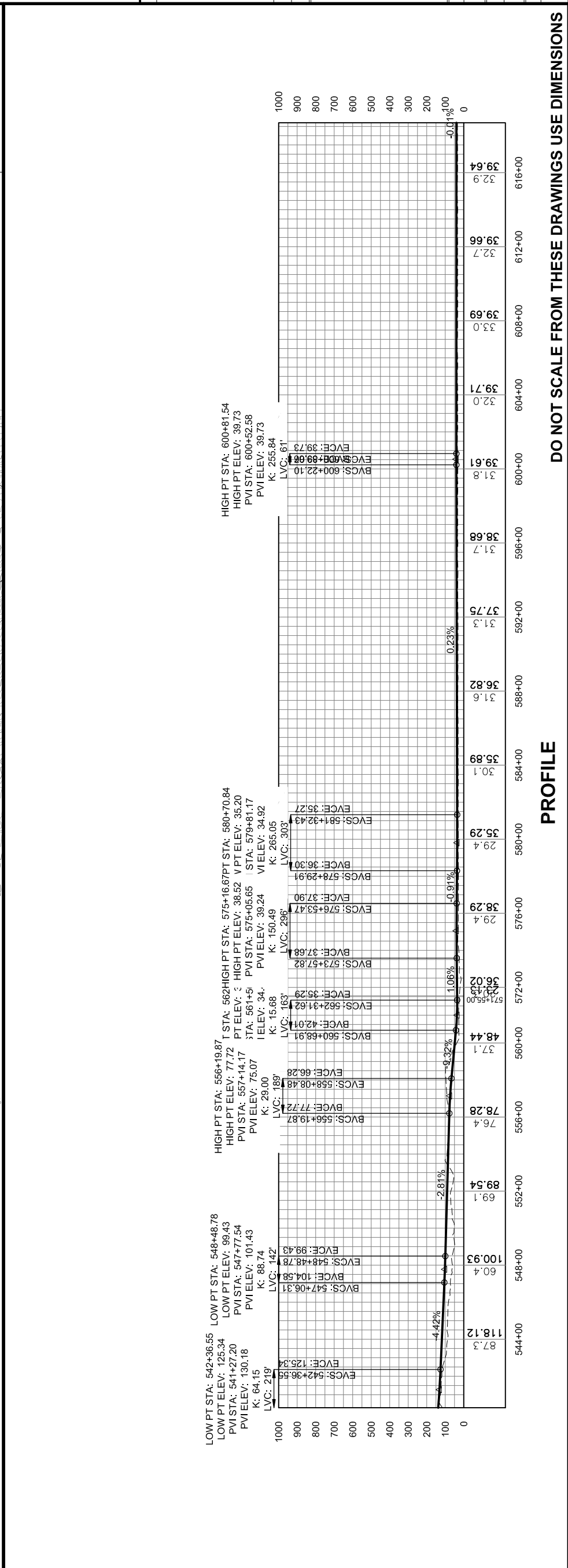
STATE OF ALASKA
 DEPARTMENT OF TRANSPORTATION
 & PUBLIC FACILITIES
 SOUTHEAST REGION

JNU-EAST LYNN CANAL
 HIGHWAY ALTERNATIVE 2B
 PROJECT #71100

**2013 EIS
 PLAN VIEW**

PROJECT DESIGNATION
71100

STATE	ALASKA	YEAR	2013
SHEET NUMBER	EL7	TOTAL SHEETS	38



This page intentionally left blank.