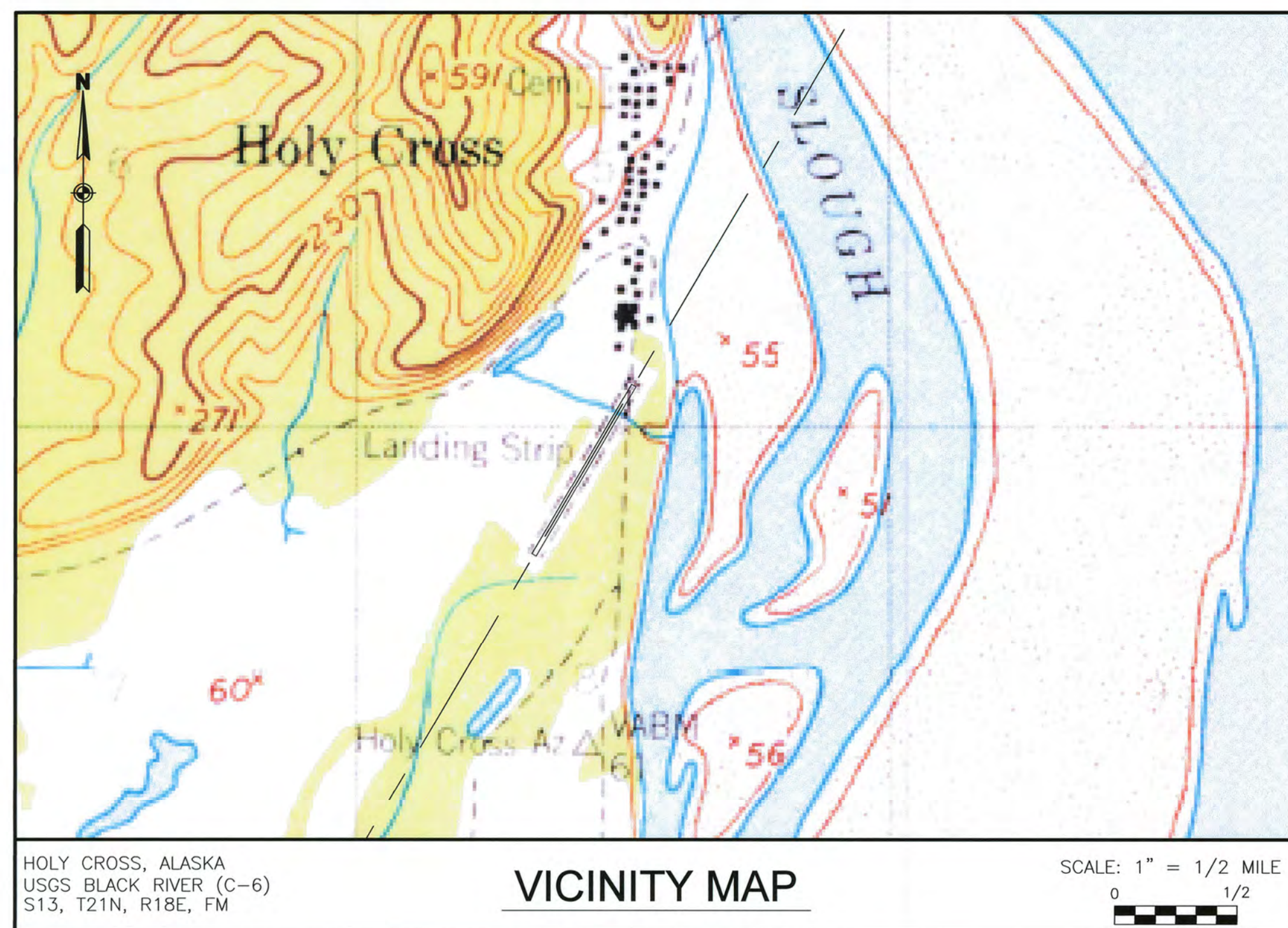


LOCATION MAP

HOLY CROSS, ALASKA AIRPORT LAYOUT PLAN HOLY CROSS AIRPORT



VICINITY MAP

LEGEND		
ITEM	EXISTING	ULTIMATE
ANTENNA		
AIRPORT REFERENCE POINT		
BUILDING		
BUILDING RESTRICTION LINE		
BUSH		
TREE		
CENTER LINE		
CONTOUR		
FUEL TANK		
FENCE		
LIGHTING		
PAPI		
PROPERTY LINE		
ROADWAY (GRAVEL)		
ROTATING BEACON		
RUNWAY (GRAVEL)		
RUNWAY OBJECT FREE AREA		
RUNWAY THRESHOLD SITING SURFACE		
RUNWAY OBSTACLE FREE ZONE		
RUNWAY SAFETY AREA		
RUNWAY SHOULDER		
RUNWAY PROTECTION ZONE		
SATELLITE DISH		
SURVEY MONUMENT		
TAXIWAY (GRAVEL)		
WATERBODY		
WIND CONE		

SHEET INDEX	
SHEET NO.	DESCRIPTION
1	COVER
2	AIRPORT DATA
3	EXISTING & ULTIMATE AIRPORT LAYOUT PLAN
4	EXISTING & ULTIMATE INNER PORTION OF APPROACH SURFACE
5	AIRPORT AIRSPACE (FAR PART 77)
6	PROPERTY MAP

U:\204700168\Holy Cross Airport\Drawings\C\Sheets\1309900HCA_ALP01-ALP01

DESIGN MMM
DRAWN RWW
CHECKED JGL

STATE OF ALASKA
DEPARTMENT OF TRANSPORTATION AND PUBLIC FACILITIES
NORTHERN REGION-AVIATION

APPROVED: Albert M.L. Beck DATE 2/18/16
ALBERT M.L. BECK, P.E. DESIGN GROUP CHIEF

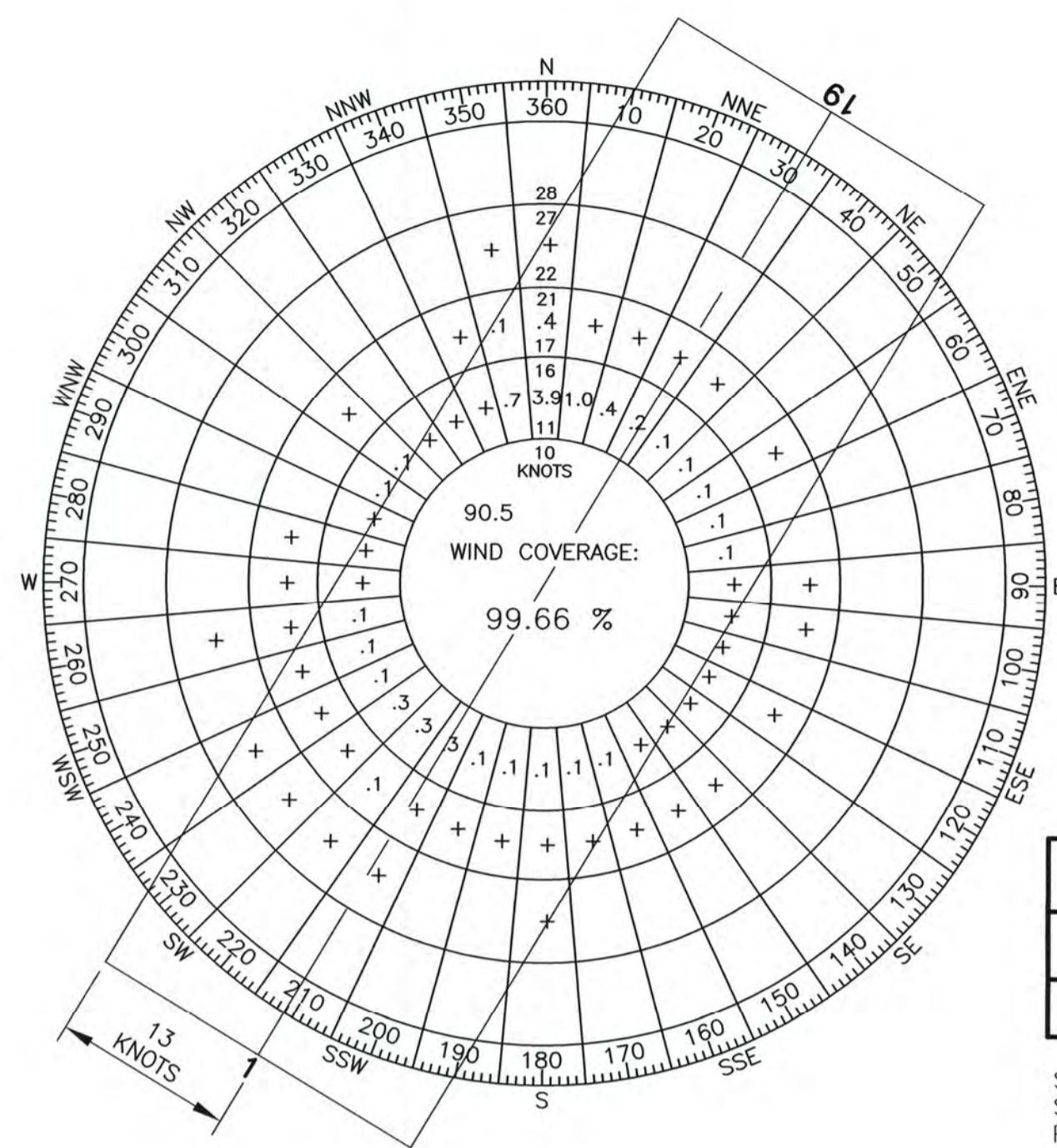
AIRPORT LAYOUT PLAN CONDITIONAL APPROVAL SUBJECT TO
ALP APPROVAL LETTER DATED 7/9/2011
FAA AIRSPACE REVIEW NUMBER: 2000-ABL-90-NRA

AS-BUILT ALP
PJ Zetla DATE 2-18-2016
FAA, AIRPORTS DIVISION ALASKAN REGION, AAL- 621

BY	DATE	REVISIONS
<u>PJ</u>	<u>2-8-16</u>	<u>As-Built</u>

HOLY CROSS AIRPORT
HOLY CROSS, ALASKA
COVER

SHEET
1 OF
6



WIND DATA	
RUNWAY	13 kt (B-II)
1-19	99.66%

SOURCE: NDCS ISH/ISD
STATION NAME: HOLY CROSS
PERIOD: 2006-2014

AIRPORT DATA		
ITEM	EXISTING	ULTIMATE
ICAO IDENTIFIER	PAHC	SAME
NATIONAL AIRPORT IDENTIFIER	HCA	SAME
FAA SITE NUMBER	50318.*A	SAME
AIRPORT REFERENCE CODE (ARC)	B-II	SAME
NPIAS SERVICE LEVEL (P, CS, R, GA)	GA	SAME
ASP CLASSIFICATION	COMMUNITY OFF-ROAD	SAME
AIRPORT ELEVATION (NAVD88)	74.5'	SAME
MEAN MAX. TEMPERATURE, HOTTEST MONTH	68°F / JULY	SAME
OBSTRUCTION SURVEY SOURCE & TYPE	AOC (SEE NOTES)	SAME
MAGNETIC DECLINATION, YEAR, RATE OF CHANGE	13°13'E, 2015, 0°19'W / YEAR	SAME
AIRPORT AND TERMINAL NAVIGATION AIDS	LIGHTED WIND CONE, ROTATING BEACON, ASOS, SEG. CIRCLE	SAME

RUNWAY 1-19 DATA		
ITEM	EXISTING	ULTIMATE
FAR PART 77 APPROACH CATEGORY (UTILITY, OTHER THAN UTILITY)	OTHER THAN UTILITY	SAME
FAR PART 77 APPROACH TYPE (V, C, NPA, PA)	NPA	SAME
AERONAUTICAL SURVEY TYPE	VERTICALLY GUIDED	SAME
RUNWAY DESIGN CODE (RDC)	B-II-5000	SAME
RUNWAY REFERENCE CODE (RRC)	B-II-5000	SAME
DESIGN AIRCRAFT	BCH-200	SAME
FAR PART 77 APPROACH SLOPE	34:1	SAME
THRESHOLD SITING SURFACE SLOPE	20:1	SAME
VISIBILITY MINIMUM	≥1 SM	SAME
RUNWAY SURFACE	GRAVEL	SAME
PAVEMENT STRENGTH (SW, DW, DTW x1000lbs)	N/A	SAME
TRUE MEAN BEARING	N 31°02'24" E	SAME
MAXIMUM ELEVATION ABOVE MSL	74.5'	SAME
EFFECTIVE GRADE	0.04%	SAME
RUNWAY TOUCHDOWN ZONE ELEVATIONS (NAVD 88)	RW 1: 73.7' RW 19: 74.5'	SAME
RUNWAY DIMENSIONS	100' x 4000'	SAME
RUNWAY SAFETY AREA (RSA) DIMENSIONS	150' x 4600'	SAME
RSA LENGTH BEYOND RW ENDS	300'	SAME
RUNWAY PROTECTION ZONE (RPZ) DIMENSIONS	500' x 700' x 1000'	SAME
RUNWAY OBJECT FREE AREA (OFA) DIMENSIONS	500' x 4600'	SAME
ROFA LENGTH BEYOND RW ENDS	300'	SAME
RUNWAY OBSTACLE FREE ZONE (OFZ) DIMENSIONS	400' x 4400'	SAME
PRECISION OBSTACLE FREE ZONE (POFZ) DIMENSIONS	N/A	SAME
RUNWAY LIGHTING TYPE	MIRL	SAME
RUNWAY MARKING TYPE (P, NP, NONE)	NONE	SAME
RUNWAY VISUAL APPROACH AIDS	NONE	PAPI
RUNWAY LANDING AIDS	RNAV/GPS	SAME

MODIFICATION OF STANDARDS				
MODIFICATION	ADVISORY CIRCULAR	STANDARD	APPROVAL	DATE
NONE				

NON-STANDARD CONDITIONS			
ITEM	STANDARD	EXISTING	ULTIMATE
BUSHES IN TSA (SEE SHEET 2)	NONE	SEE SHEET 2	TO BE REMOVED
RW 1/19 THRESHOLD LIGHTS	INBOARD (2'-10' OFFSET)	INBOARD (0' OFFSET)	INBOARD (2'-10' OFFSET)
SEWAGE LAGOON SEPARATION	5000'	850'	850'
LANDFILL SEPARATION	5000'	3100'	3100'

PACS & SACS							
DESIGNATION	LATITUDE	LONGITUDE	ELLIPSOID HEIGHT	NORTHING	EASTING	ELEVATION	DESCRIPTION
HCA A	62°11'15.82"N	159°46'36.33"W	105.27'	2995775.84	1336913.23	73.5'	PACS
HCA B	62°11'28.04"N	159°46'23.45"W	106.55'	2996999.98	1337558.27	74.8'	SACS
HCA C	62°10'58.99"N	159°46'57.93"W	98.98'	2994094.77	1335841.37	67.2'	SACS

GEOGRAPHIC COORDINATES (NAD 83) & ELEVATIONS (NAVD 88)						
ITEM	EXISTING LATITUDE	EXISTING LONGITUDE	EXISTING ELEVATION	ULTIMATE LATITUDE	ULTIMATE LONGITUDE	ULTIMATE ELEVATION
AIRPORT REFERENCE POINT	62°11'17.87"N	159°46'29.82"W	N/A	SAME	SAME	SAME
RUNWAY 1 END	62°11'01.00"N	159°46'51.58"W	73.3'	SAME	SAME	SAME
RUNWAY 19 END	62°11'34.73"N	159°46'08.06"W	74.5'	SAME	SAME	SAME

DECLARED DISTANCES					
	RUNWAY	TORA	TODA	ASDA	LDA
EXISTING	1	NONE	NONE	NONE	NONE
	19	NONE	NONE	NONE	NONE
ULTIMATE	1	NONE	NONE	NONE	NONE
	19	NONE	NONE	NONE	NONE

- NOTES**
- THIS ALP DRAWING SET IS UPDATED BASED ON AN AIRPORT OBSTRUCTION CHART SURVEY (AOC) COMPLETED BY USKH INC. IN 2013 IN ACCORDANCE WITH FAA AC 150/5300-18B. THIS ALP WAS UPDATED IN ACCORDANCE WITH FAA AC 150/5300-13A AND 150/5070-6B IN JANUARY 2014.
 - VERTICAL DATUM IS NAVD 1988 USING GEOID12A AND REFERENCING PACS "HCA A"
 - HORIZONTAL DATUM IS NAD83 (2011). DRAWING COORDINATES ARE ALASKA STATE PLANE ZONE 6, U.S. SURVEY FEET, UNLESS NOTED OTHERWISE.

TAXIWAY DATA		
ITEM	EXISTING	ULTIMATE
TAXIWAY DESIGN GROUP	2	SAME
TAXIWAY DIMENSIONS	40' x 185'	SAME
TAXIWAY SHOULDER WIDTH	12'	SAME
TAXIWAY EDGE SAFETY MARGIN	7.5'	SAME
SEPARATION FROM PARALLEL RUNWAY	N/A	SAME
TAXIWAY SAFETY AREA (TSA) WIDTH	79'	SAME
TAXIWAY OBJECT FREE AREA (TOFA) WIDTH	131'	SAME
TAXIWAY LIGHTING	MITL	SAME
TAXIWAY MARKING	NONE	SAME

U:\204700168\Holy Cross Airport\Dwgs\C\Sheets\1309900HCA_ALP02-ALP02

DESIGN MMM
DRAWN RWW
CHECKED JGL

STATE OF ALASKA
DEPARTMENT OF TRANSPORTATION AND PUBLIC FACILITIES
NORTHERN REGION-AVIATION

APPROVED: Albert M.L. Beck DATE 2/8/16
ALBERT M.L. BECK, P.E. DESIGN GROUP CHIEF

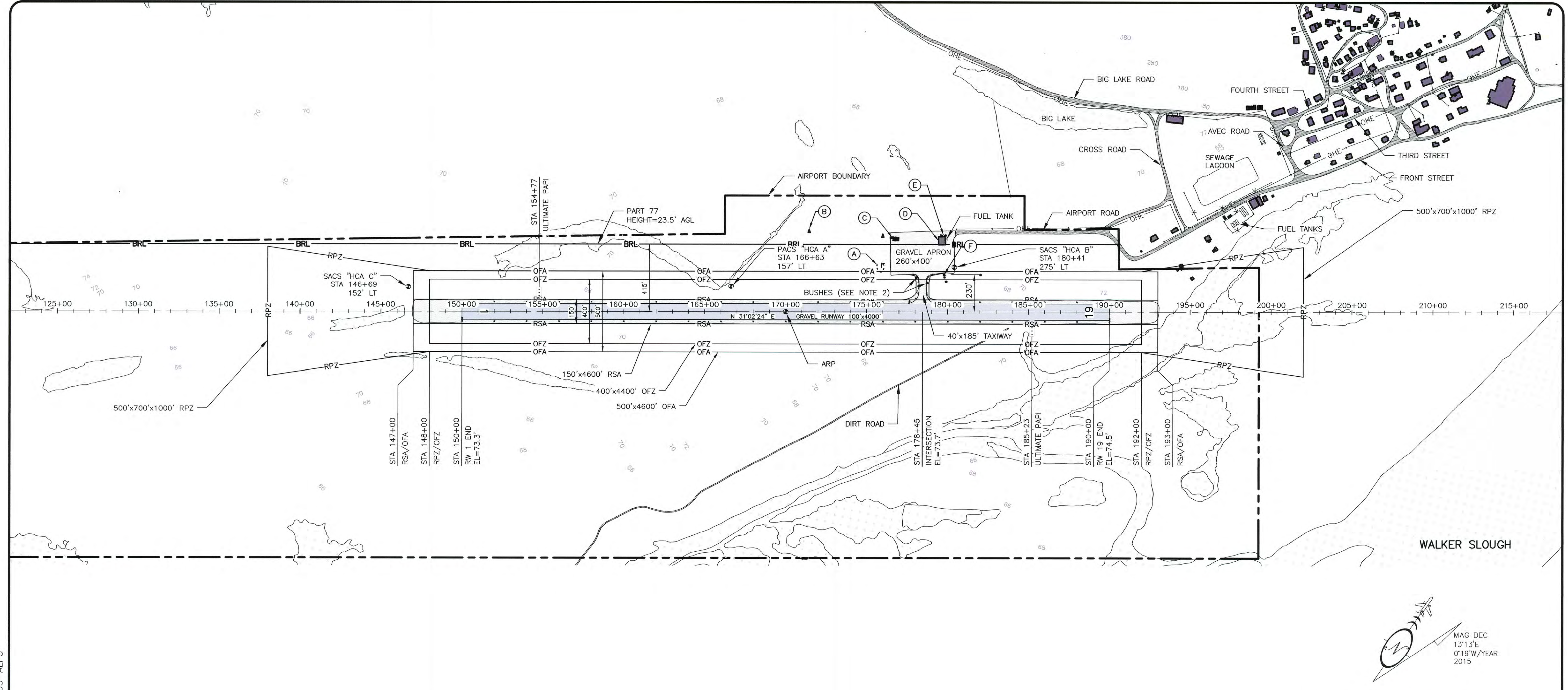
BY	DATE	REVISIONS	FAA

BY	DATE	REVISIONS	FAA
<u>AL</u>	<u>2-8-16</u>	<u>As-Built</u>	

HOLY CROSS AIRPORT
HOLY CROSS, ALASKA
AIRPORT DATA

SHEET
2 OF
6

U:\204700168\Holy Cross Airport\Drawings\C\Sheets\1309900HCA_ALP03-ALP3



BUILDINGS/FACILITIES			
BLD/FAC	DESCRIPTION	STATION/OFFSET	TOP ELEV.
(A)	LIGHTED WIND CONE & SEG. CIRCLE	175+91/272' LT	92.1'
(B)	NDB TOWER (ABANDONED)	171+44/486' LT	115'
(C)	ASOS	176+72/437' LT	101.6'
(D)	SREB	179+66/411' LT	100.2'
(E)	ROTATING BEACON	179+73/470' LT	103.1'
(F)	ELECTRICAL EQUIPMENT BUILDING	179+78/224' LT	79.7'

- NOTES:
- OFZ PENETRATIONS CONSIST OF TREES AND BUSHES ALONG BOTH SIDES OF RUNWAY 1/19.
 - BUSHES TO BE REMOVED.

DESIGN MMM
 DRAWN RWW
 CHECKED JGL

STATE OF ALASKA
 DEPARTMENT OF TRANSPORTATION AND PUBLIC FACILITIES
 NORTHERN REGION-AVIATION

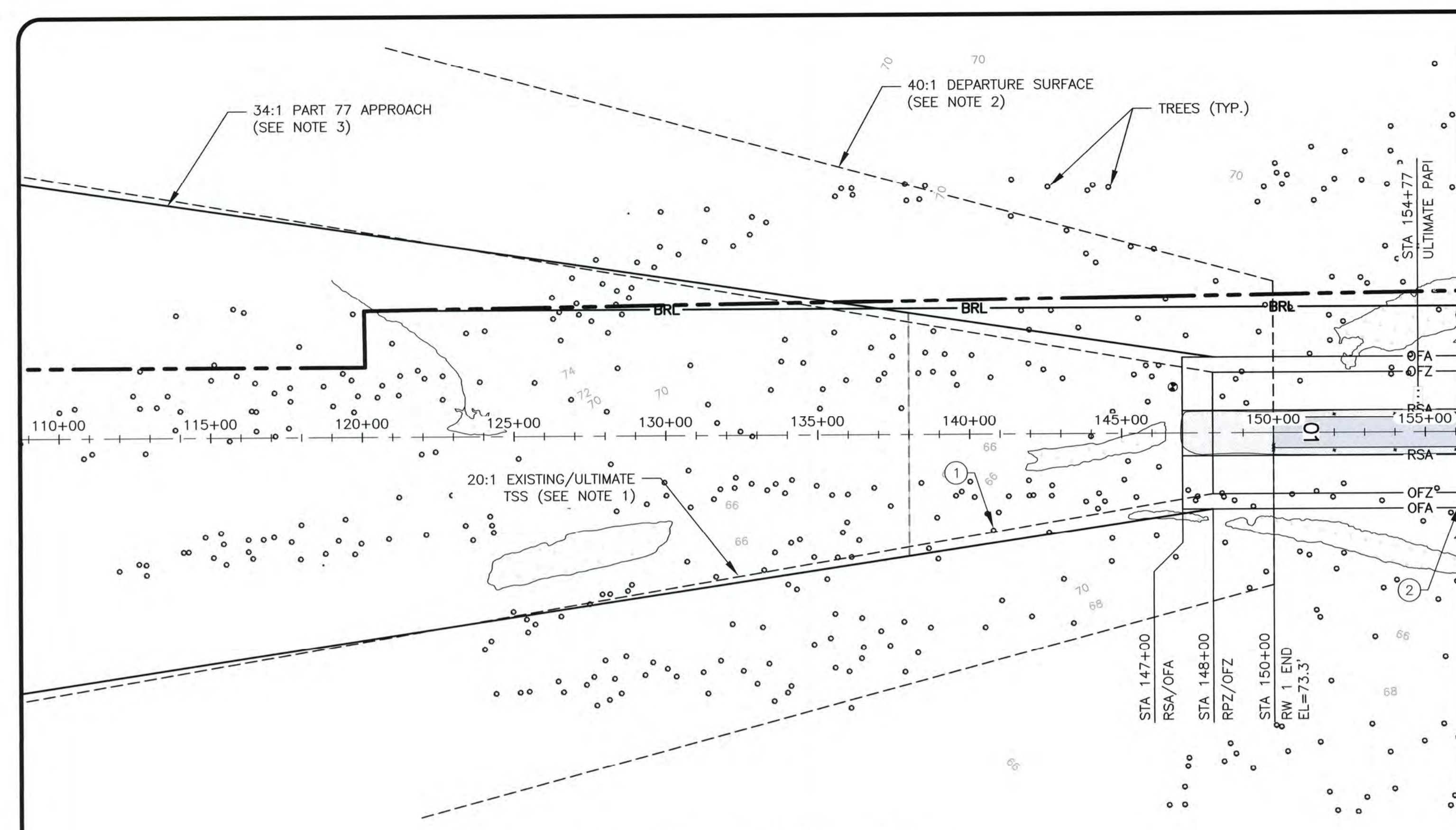
APPROVED: *Albert M.L. Beck* DATE 2/8/16
 ALBERT M.L. BECK, P.E. DESIGN GROUP CHIEF

BY	DATE	REVISIONS	FAA

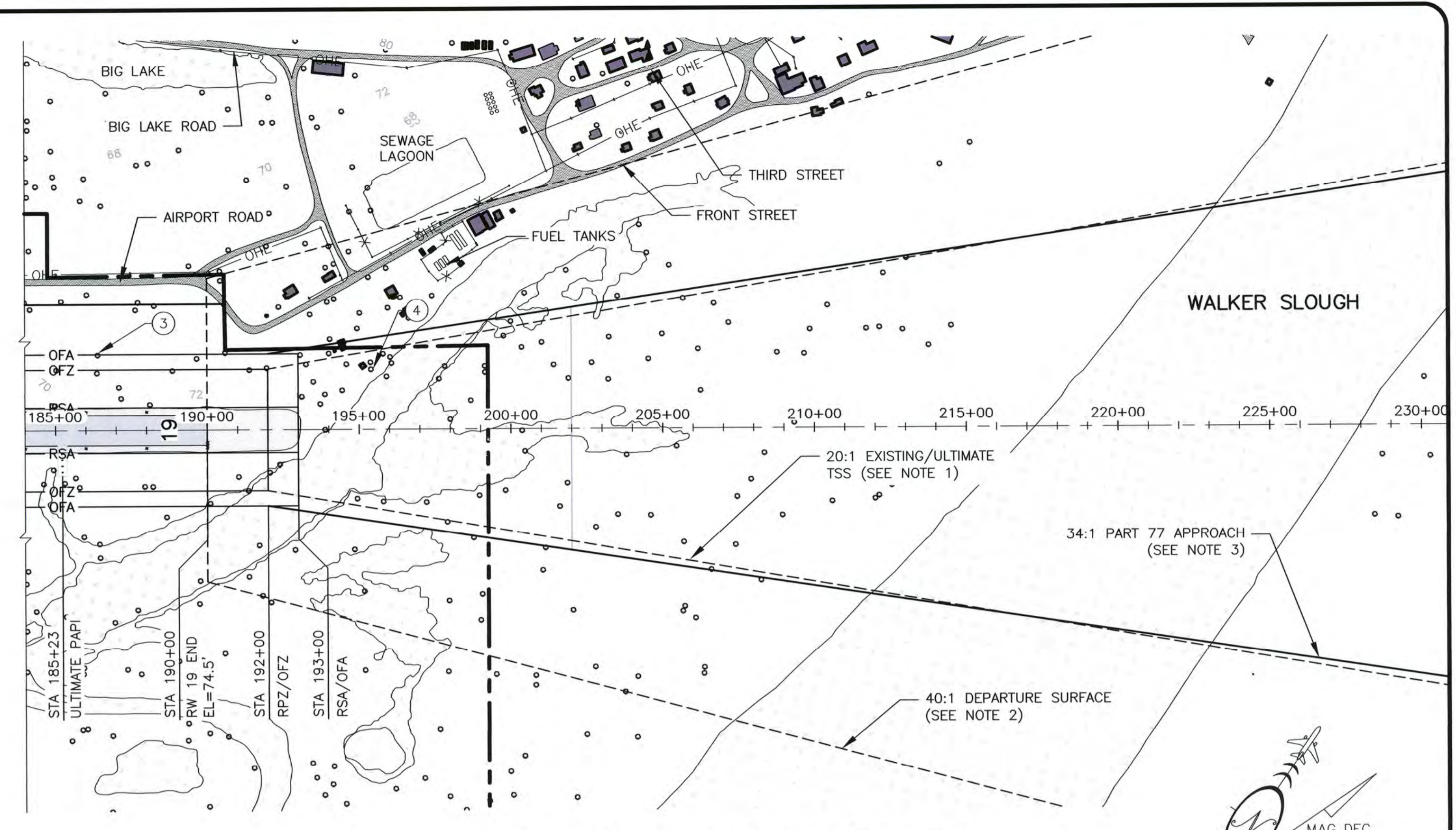
BY	DATE	REVISIONS	FAA
<u>PT</u>	<u>2-8-16</u>	<u>As-Built</u>	

HOLY CROSS AIRPORT
 HOLY CROSS, ALASKA
 EXISTING & ULTIMATE
 AIRPORT LAYOUT PLAN

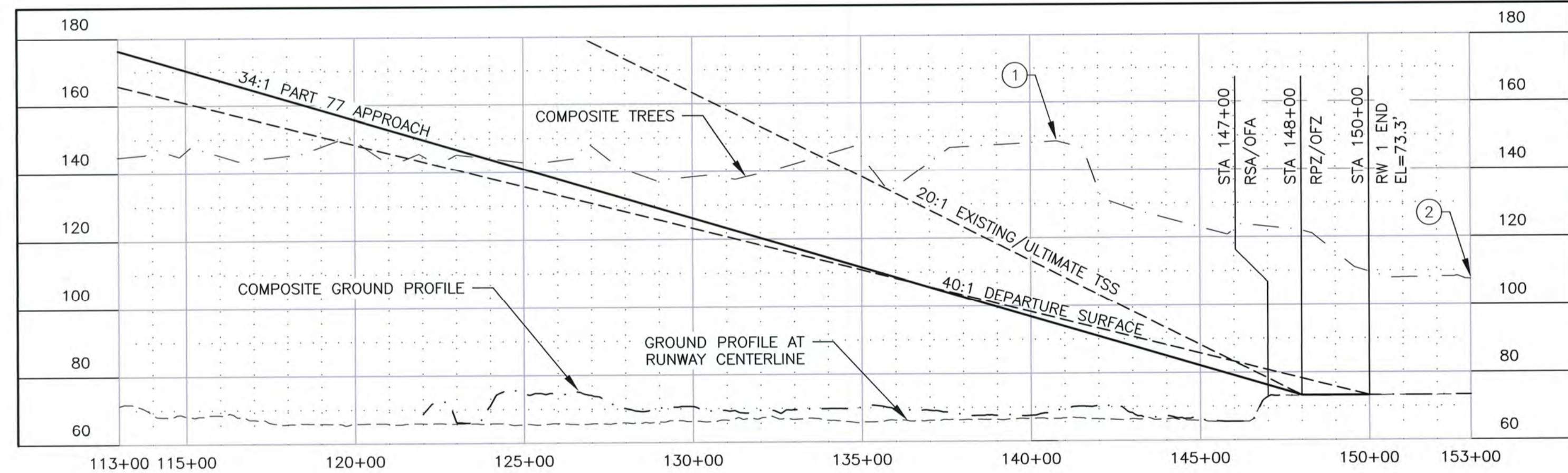
SHEET
3 OF
6



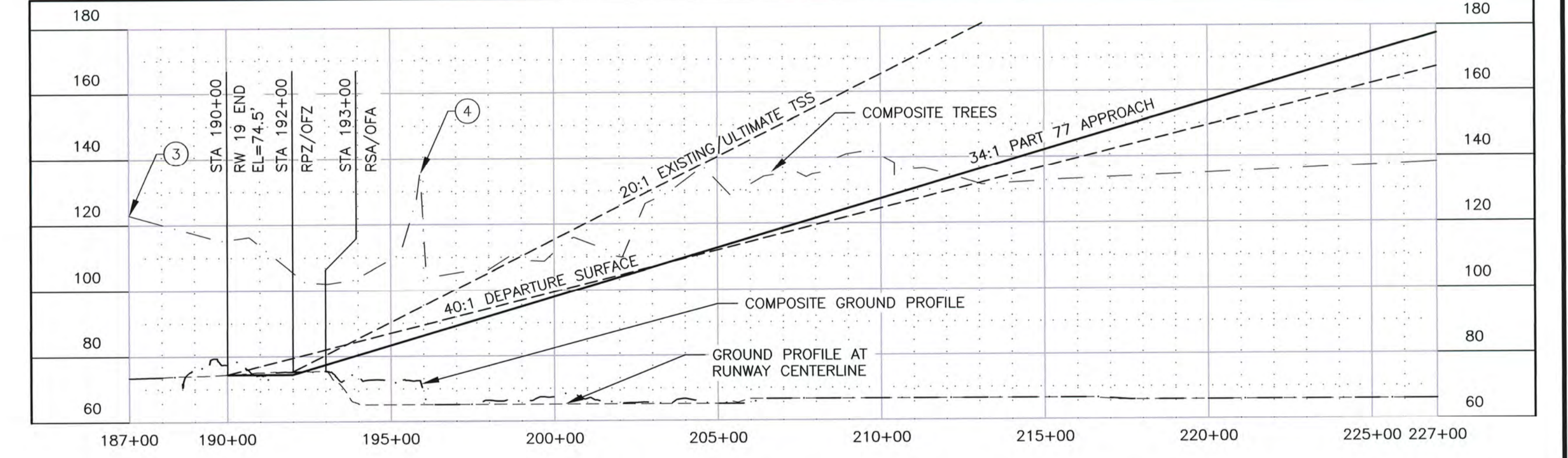
RUNWAY 1 INNER APPROACH PLAN



RUNWAY 19 INNER APPROACH PLAN



RUNWAY 1 INNER APPROACH PROFILE



RUNWAY 19 INNER APPROACH PROFILE

ID#	DESCRIPTION	STATION/OFFSET	ELEV.	SURFACE ELEV.	SURFACE PENETRATED	SURFACE PENETRATION	DISPOSITION
1	TREES (HP)	140+77/317' RT	148'	109'	TSS	39'	REMOVE
2	TREES (HP)	160+18/247' RT	138'	74'	PRIMARY	64'	REMOVE

- NOTES:
- R/W 1 HAS OBSTACLE FREE ZONE & THRESHOLD SITING SURFACE PENETRATIONS
 - R/W 1 TREE OBSTRUCTIONS EXTEND ALONG BOTH SIDES OF RUNWAY AND INTO APPROACH

- GENERAL NOTES:
- EXISTING/ULTIMATE TSS DIMENSION = 400'x3800'x10000', SLOPE EXTENDS 10000' AT 20:1 (RUNWAY TYPE 4, TABLE 3-2, AC 150/5300-13A)
 - DEPARTURE SURFACE DIMENSION = 1000'x6466'x10200', SLOPE EXTENDS 10200' AT 40:1
 - PART 77 APPROACH SURFACE DIMENSION = 500'x3500'x10000', SLOPE EXTENDS 10000' AT 34:1
 - PART 77 APPROACH SURFACE PART 77 ROAD OBSTRUCTION HEIGHTS ARE INCLUDED (10' FOR PRIVATE ROAD & 15' FOR PUBLIC ROAD)
 - HP=HIGH POINT OF TREES/VEGETATION OBSTRUCTIONS

ID#	DESCRIPTION	STATION/OFFSET	ELEV.	SURFACE ELEV.	SURFACE PENETRATED	SURFACE PENETRATION	DISPOSITION
3	TREES (HP)	186+40/248' LT	123'	74'	PRIMARY	49'	REMOVE
4	TREES (HP)	195+39/198' LT	136'	93'	TSS	43'	REMOVE

- NOTES:
- R/W 19 HAS OBSTACLE FREE ZONE & THRESHOLD SITING SURFACE PENETRATIONS
 - R/W 19 TREE OBSTRUCTIONS EXTEND ALONG BOTH SIDES OF RUNWAY AND INTO APPROACH

U:\204700168\Holy Cross Airport\Drawings\C\Sheets\1309900HCA_ALP04-ALP 4

DESIGN MMM
 DRAWN RWW
 CHECKED JGL

STATE OF ALASKA
 DEPARTMENT OF TRANSPORTATION AND PUBLIC FACILITIES
 NORTHERN REGION-AVIATION

APPROVED: Albert M.L. Beck DATE 2/8/16
 ALBERT M.L. BECK, P.E. DESIGN GROUP CHIEF

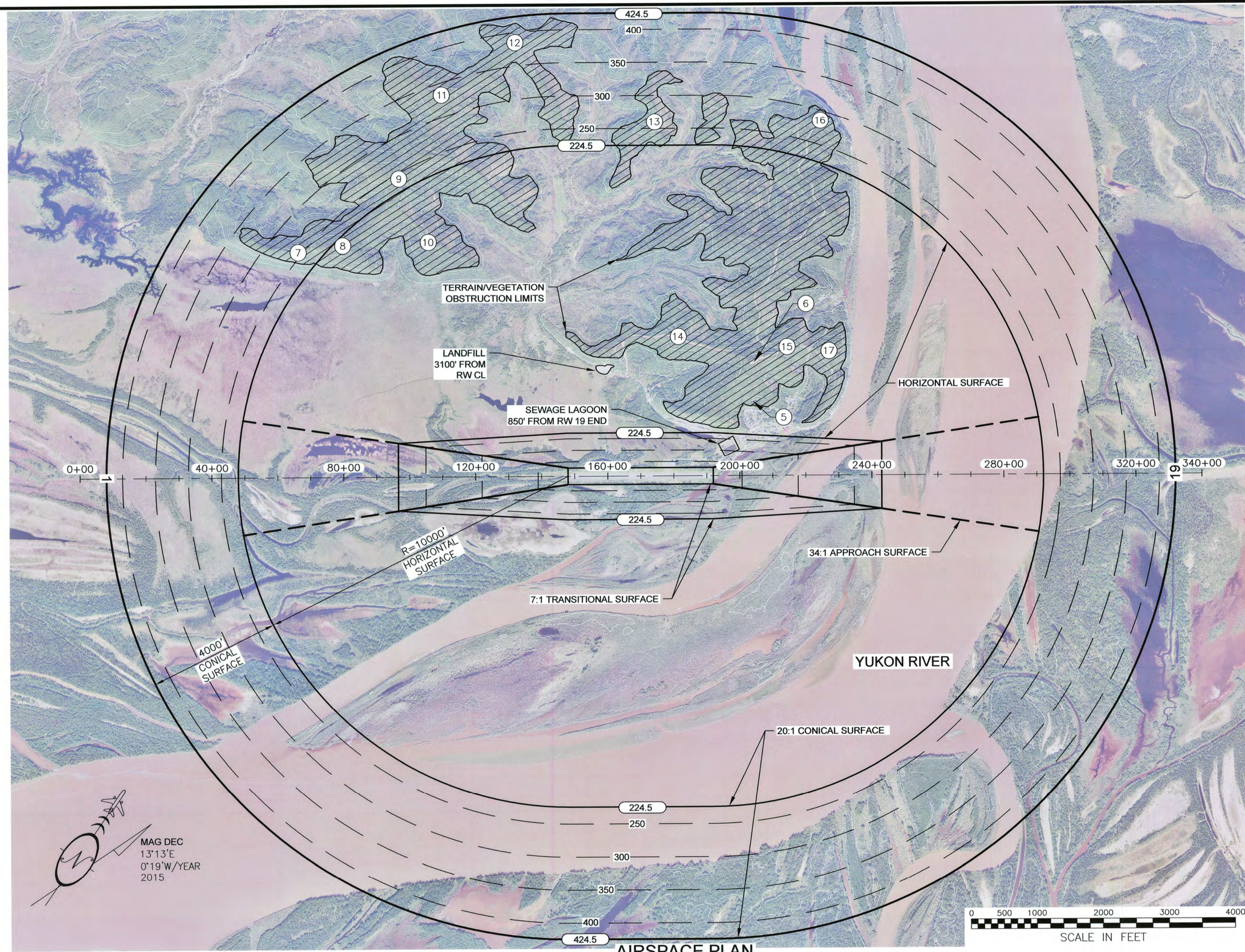
BY	DATE	REVISIONS	FAA
<u>AS</u>	<u>2-8-16</u>	<u>AS-BUILT</u>	

BY	DATE	REVISIONS	FAA

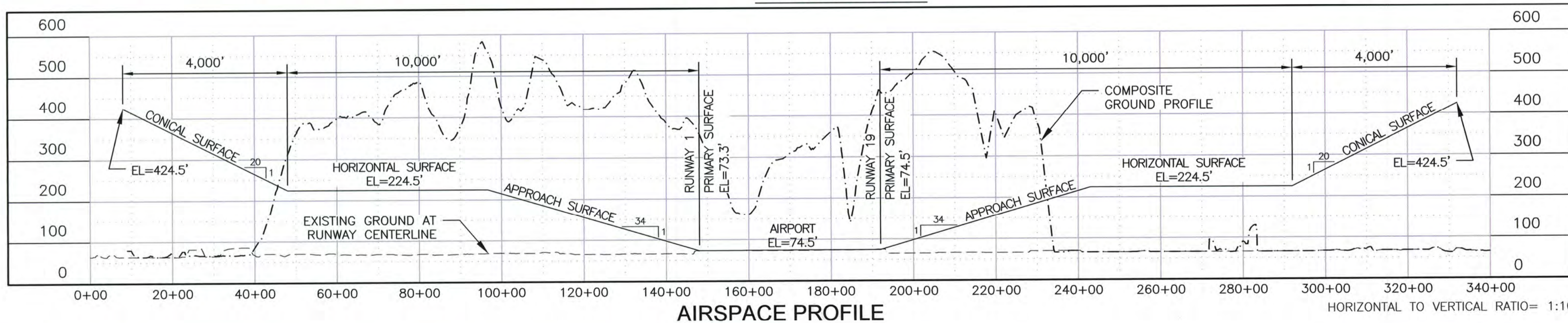
HOLY CROSS AIRPORT
 HOLY CROSS, ALASKA
 EXISTING & ULTIMATE
 INNER PORTION OF APPROACH SURFACE

SHEET
 4 OF
 6

U:\204700168\Holy Cross Airport\Dwgs\C\Sheets\1309900HCA_ALP05-ALP_5

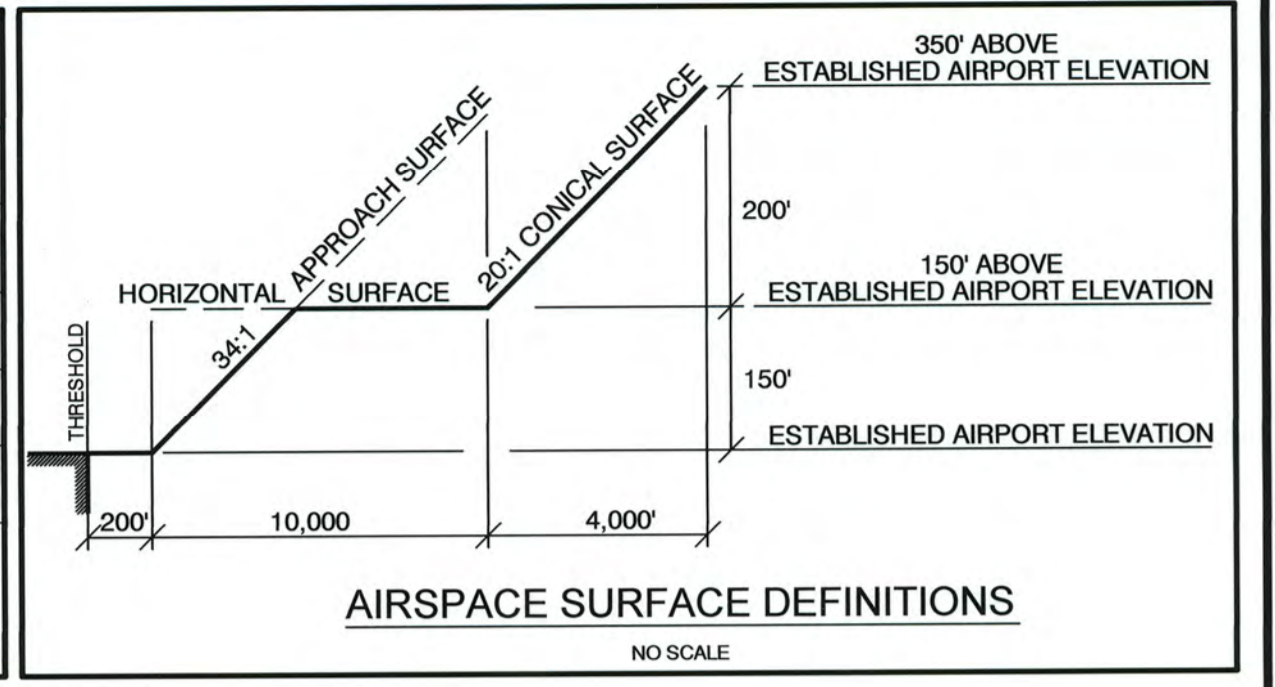


AIRSPACE PLAN



AIRSPACE PROFILE

LEGEND	
	AIRSPACE ELEVATION (SURFACE DIVIDERS)
	AIRSPACE SURFACE DIVIDERS (NON CONTROLLING)
	AIRSPACE ELEVATION (50' INCREMENTS)
	EXISTING GROUND ELEVATIONS
	RUNWAY CENTERLINE (EXTENDED)
	AIRSPACE TERRAIN/VEGETATION OBSTRUCTION



ULTIMATE RUNWAY FAR PART 77 DIMENSIONS UTILITY, NPA, >1 S.M.	
DESCRIPTION	DIMENSION
ESTABLISHED AIRPORT ELEVATION	74.5'
RUNWAY THRESHOLD ELEVATION	RW1: 73.3' \ RW19: 74.5'
PRIMARY SURFACE	500' x 4400'
HORIZONTAL SURFACE ELEVATION	224.5'
HORIZONTAL SURFACE RADIUS	10000'
APPROACH SURFACE	500' x 3500' x 10000'
APPROACH SURFACE SLOPE	34:1
CONICAL SURFACE WIDTH	4000' @ 20:1
TRANSITIONAL SURFACE SLOPE	7:1

FAR PART 77 SURFACE OBSTRUCTION TABLE							
ID #	DESCRIPTION	STATION/OFFSET	ELEV.	SURFACE PENETRATED	SURFACE ELEV.	SURFACE PENETRATION	DISPOSITION
5	BUILDING/ANTENNA*	203+96/2275' LT	305'	HORIZONTAL	225'	80'	TO REMAIN
6	BUILDING/ANTENNA*	204+05/3410' LT	687'	HORIZONTAL	225'	462'	TO REMAIN
7	TERRAIN/VEGETATION (HP)	66+38/6810' LT	458'	CONICAL	256'	202'	TO REMAIN
8	TERRAIN/VEGETATION (HP)	79+72/7010' LT	533'	HORIZONTAL	225'	308'	TO REMAIN
9	TERRAIN/VEGETATION (HP)	96+97/9030' LT	635'	CONICAL	243'	392'	TO REMAIN
10	TERRAIN/VEGETATION (HP)	105+95/7110' LT	465'	HORIZONTAL	225'	240'	TO REMAIN
11	TERRAIN/VEGETATION (HP)	110+10/11560' LT	588'	CONICAL	333'	255'	TO REMAIN
12	TERRAIN/VEGETATION (HP)	132+48/13120' LT	568'	CONICAL	385'	183'	TO REMAIN
13	TERRAIN/VEGETATION (HP)	173+47/10620' LT	380'	CONICAL	255'	125'	TO REMAIN
14	TERRAIN/VEGETATION (HP)	181+59/4220' LT	425'	HORIZONTAL	225'	200'	TO REMAIN
15	ROAD +15'	214+50/3900' LT	305'	HORIZONTAL	225'	81'	TO REMAIN
16	ROAD +15'	224+87/10730' LT	410'	CONICAL	286'	124'	TO REMAIN
17	TERRAIN/VEGETATION (HP)	228+65/3730' LT	482'	HORIZONTAL	225'	257'	TO REMAIN

NOTES:

- BUILDING/ANTENNA PENETRATION INCLUDES 54' TERRAIN OBSTRUCTION.
- BUILDING/ANTENNA PENETRATION INCLUDES 328' TERRAIN OBSTRUCTION.
- HP = HIGH POINT OF TERRAIN/VEGETATION OBSTRUCTION

GENERAL NOTES:

- REFER TO INNER PORTION OF APPROACH SURFACE (SHEET 4) FOR CLOSE IN OBSTRUCTIONS ANALYZED WITH THE THRESHOLD SITING SURFACE & PART 77 APPROACH SURFACE.
- THERE ARE NO KNOWN HEIGHT RESTRICTIONS.
- REFER TO THE AIRPORT LAYOUT PLAN (SHEET 3) FOR BUILDING LOCATIONS AND ELEVATIONS.
- GROUND SURFACE INFORMATION WAS PROVIDED BY AN AERIAL MAPPING SUBCONTRACTOR. A CAREFUL COMPARISON WITH SURVEYED DATA WAS MADE TO ENSURE THAT ALL INFORMATION MEETS THE ACCURACY REQUIREMENTS ESTABLISHED IN AC 150/5300-18B.

DESIGN MMM
DRAWN RWW
CHECKED JGL

STATE OF ALASKA
DEPARTMENT OF TRANSPORTATION AND PUBLIC FACILITIES
NORTHERN REGION-AVIATION

APPROVED: *Albert M.L. Beck*
ALBERT M.L. BECK, P.E. DATE 2/8/16
DESIGN GROUP CHIEF

BY	DATE	REVISIONS	FAA
<i>2-8-16</i>		As-Built	

BY	DATE	REVISIONS	FAA

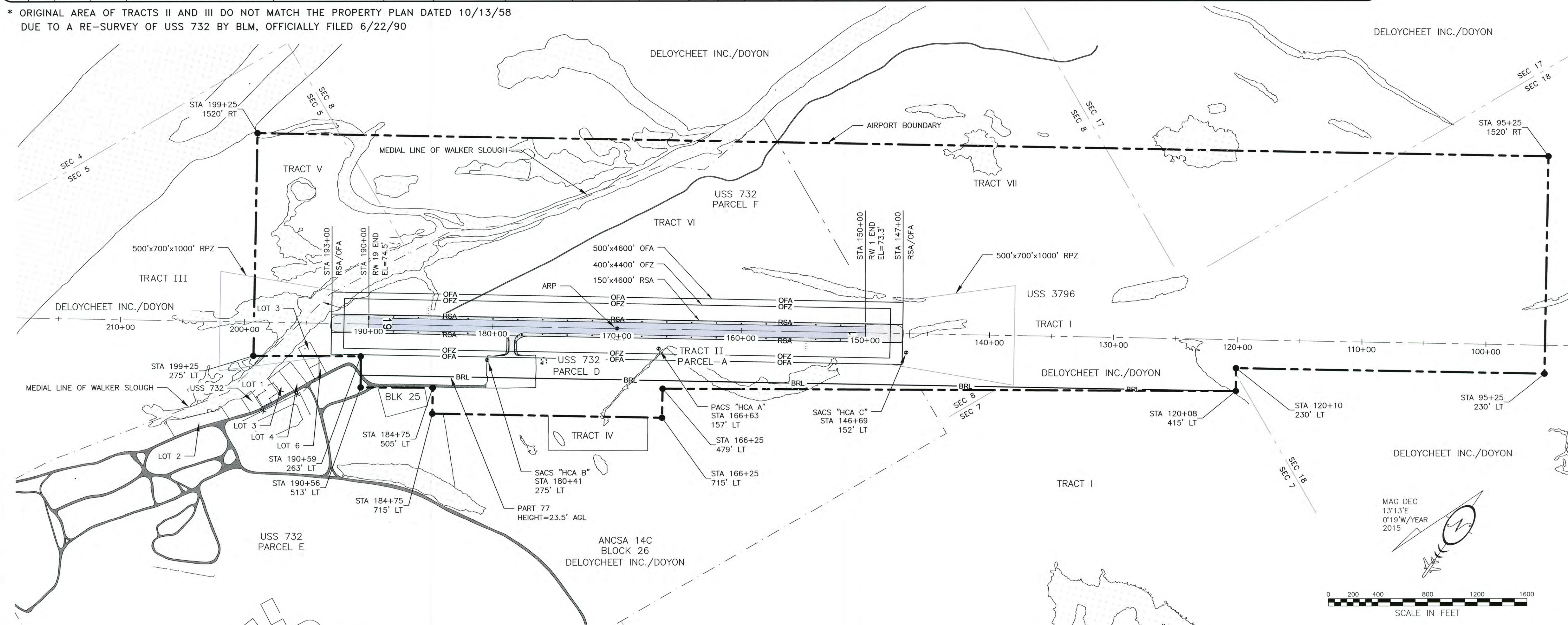
HOLY CROSS AIRPORT
HOLY CROSS, ALASKA
AIRPORT AIRSPACE
(FAR PART 77)

SHEET
5 OF 6

PROPERTY STATUS

TR	PCL	AREA (acr)	REMAIN (acr)	GRANTOR	INTEREST	DATE ACQD	FAA PROJ #	AIP NO.	AKSAS NO.	EXP. DATE	TR	PCL	AREA (acr)	REMAIN (acr)	GRANTOR	INTEREST	ACQD	FAA PROJ #	AIP NO.	AKSAS NO.	EXP. DATE	
I	N/A	64.950	N/A	PATENT/50-81-0049	SURFACE	01/23/81	3-02-0130-01				III	G	0.466	N/A	DELOYCHEET INC./DOYON	TO BE RELINQUISHED		3-02-0130-03				
*II	A	99.719	N/A	CATHOLIC/CHURCH	WARRANTY DEED	04/20/59	3-02-0130-01				III	H	0.076	N/A	DELOYCHEET INC./DOYON	TO BE RELINQUISHED		3-02-0130-03				
*II	B	1.113	N/A	CATHOLIC/CHURCH	TO BE RELINQUISHED	04/20/59	3-02-0130-01				IV	A	4.198	4.992	CITY OF HOLY CROSS			3-02-0130-03				
*III	A	5.800	N/A	U.S.A./17b	A&H / EASEMENT		3-02-0130-01				V	N/A	62.523	LARGE	DELOYCHEET INC./DOYON			3-02-0130-03				
III	B	5.531	N/A	DELOYCHEET INC./DOYON			3-02-0130-03				VI	N/A	45.112	LARGE	DELOYCHEET INC./DOYON			3-02-0130-03				
III	C	1.154	4.846	DELOYCHEET INC./DOYON			3-02-0130-03				VII	N/A	175.427	LARGE	DELOYCHEET INC./DOYON			3-02-0130-03				
III	D	0.002	0.448	HEIRS OF MOSES EDWARDS, SR.			3-02-0130-03				VIII	A	4.636	122.484	DELOYCHEET INC./DOYON			3-02-0130-03				
III	E	0.241	N/A	HEIRS OF MOSES EDWARDS, SR.	A&H / EASEMENT TO BE RELINQUISHED		3-02-0130-03				VIII	B	0.632	121.848	DELOYCHEET INC./DOYON			3-02-0130-03				
III	F	0.162	N/A	DELOYCHEET INC./DOYON	A&H / EASEMENT TO BE RELINQUISHED		3-02-0130-03											3-02-0130-03				

* ORIGINAL AREA OF TRACTS II AND III DO NOT MATCH THE PROPERTY PLAN DATED 10/13/58 DUE TO A RE-SURVEY OF USS 732 BY BLM, OFFICIALLY FILED 6/22/90



U:\204700168\Holy Cross Airport\Dwgs\C\Sheets\1309900HCA_ALP06--Sheet1

DESIGN MMM
 DRAWN RWW
 CHECKED JGL

STATE OF ALASKA
 DEPARTMENT OF TRANSPORTATION AND PUBLIC FACILITIES
 NORTHERN REGION-AVIATION

APPROVED: Albert M.L. Beck DATE 2/10/16
 ALBERT M.L. BECK, P.E. DESIGN GROUP CHIEF

BY	DATE	REVISIONS	FAA
<u>PB</u>	<u>2-8-16</u>	<u>As-Built</u>	

BY	DATE	REVISIONS	FAA

HOLY CROSS AIRPORT
 HOLY CROSS, ALASKA
 PROPERTY MAP

SHEET
6 OF 6