

NOTES:
THE VERTICAL DATUM IS ASSUMED.

THE HORIZONTAL DATUM IS ALASKA STATE PLANE, ZONE 7, NAD 83.
MAPPED FROM PHOTOGRAPHY DATED 8-28-1994.

THIS DRAWING CONFORMS TO NATIONAL MAP ACCURACY STANDARDS AS RELATED
TO THE PROJECT PHOTO CONTROL FOR SCALES OF 1" = 100' OR SMALLER.

THE ALASKA STATE PLANE GRID BEARING FOR THE R/W CENTERLINE IS S 22°16'56" E.

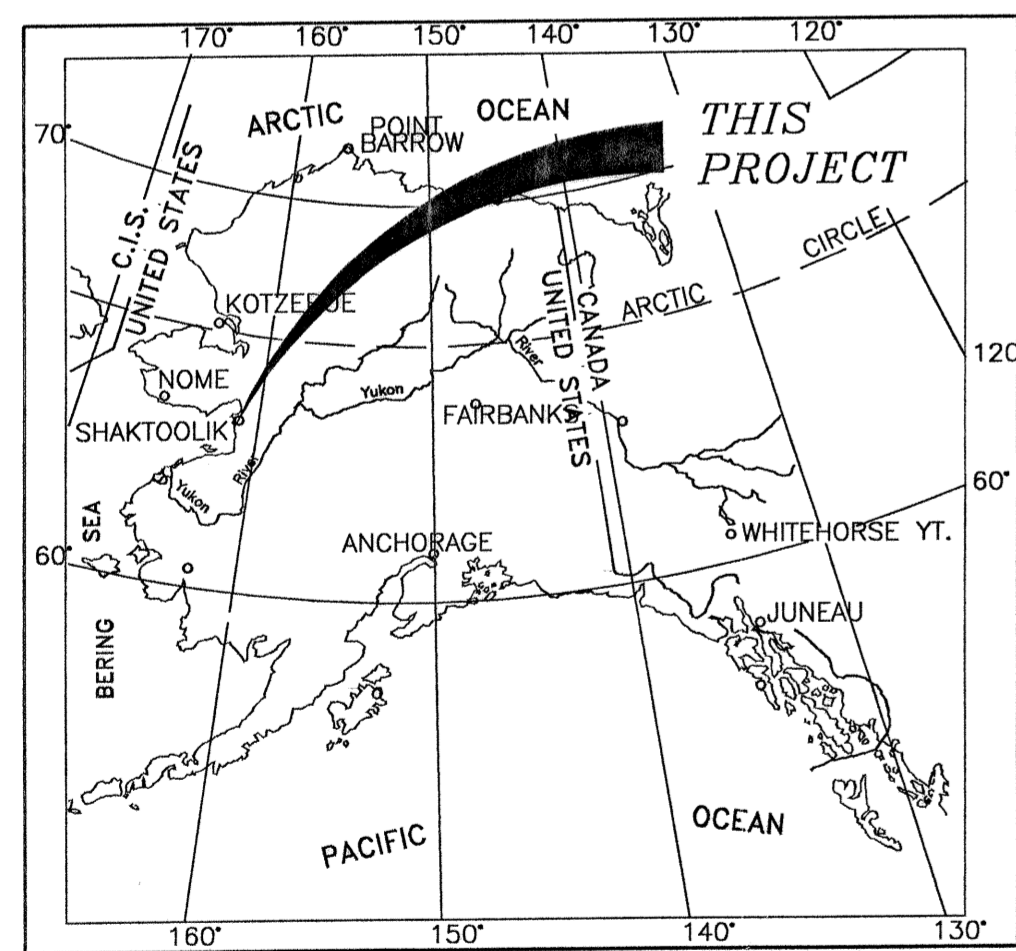
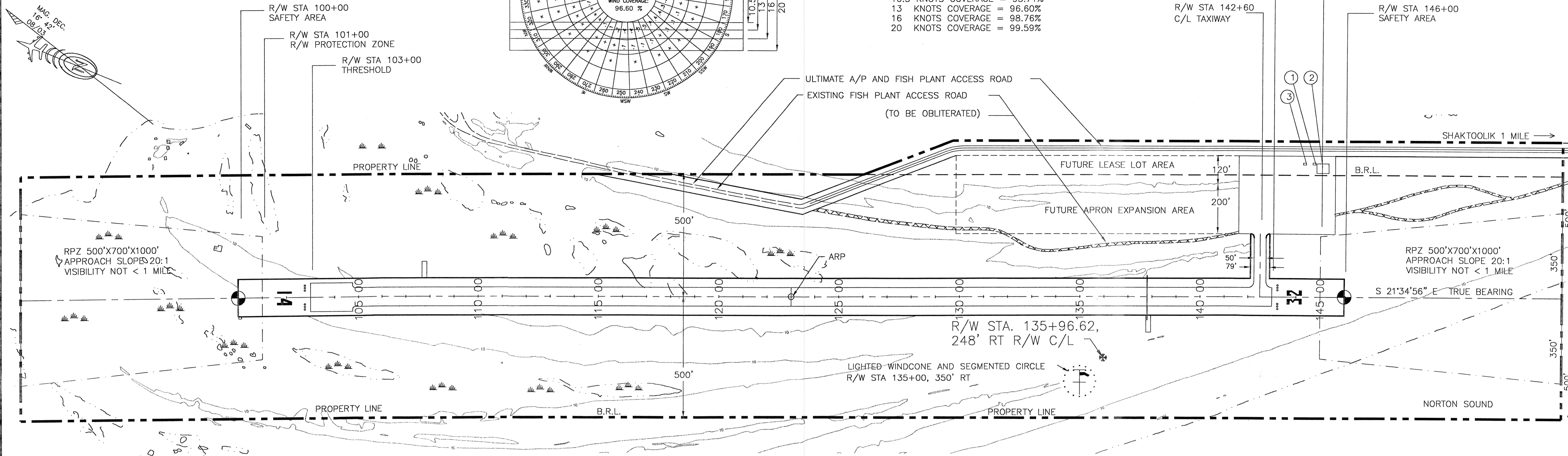
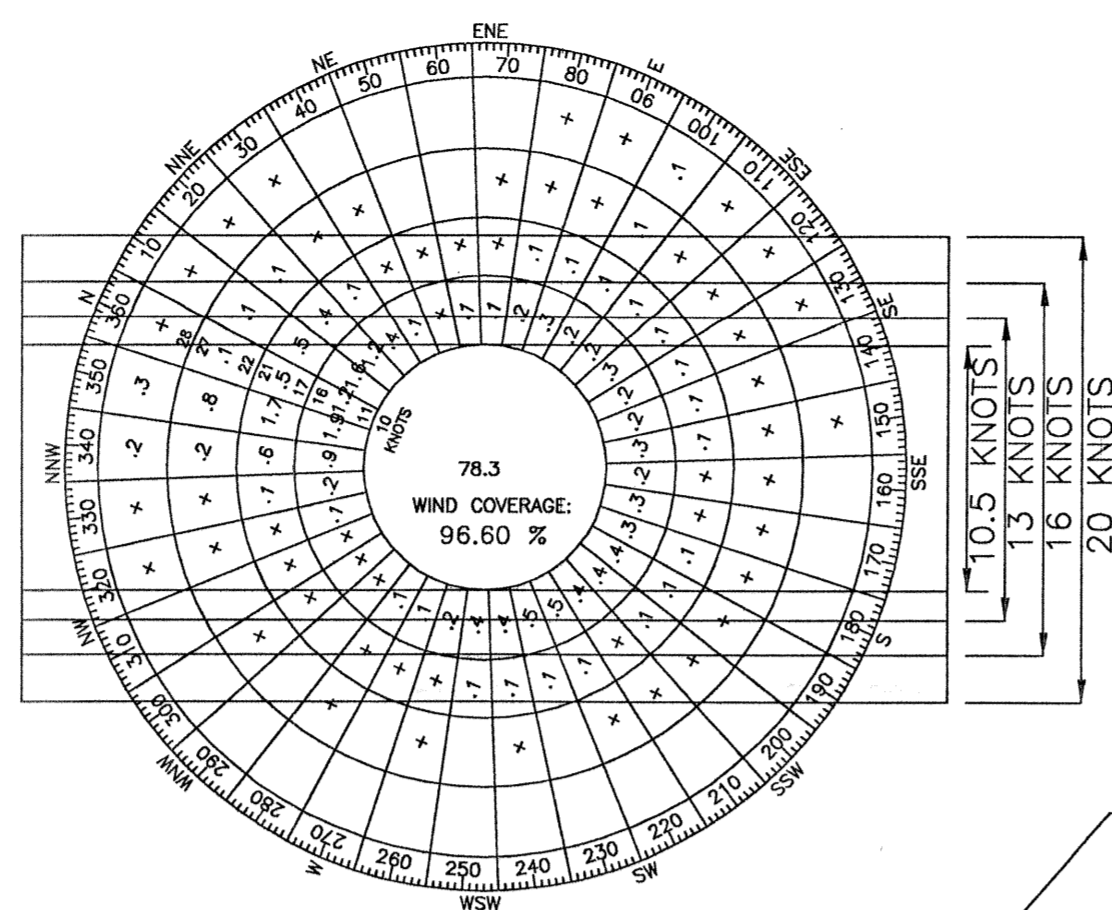
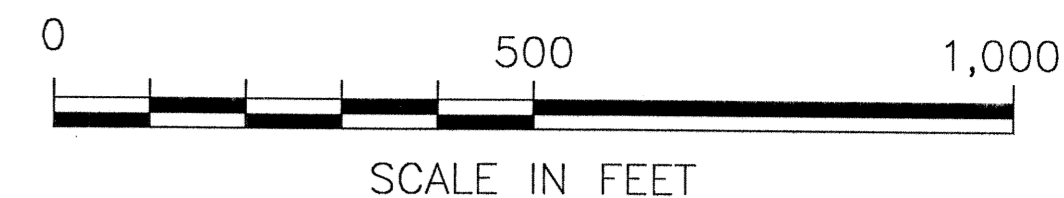
THE GEODETIC COORDINATES WERE COMPUTED FROM SURVEY CONTROL TIES TO GPS
CONTROL POINTS NEAR THE RUNWAY.

WIND DATA

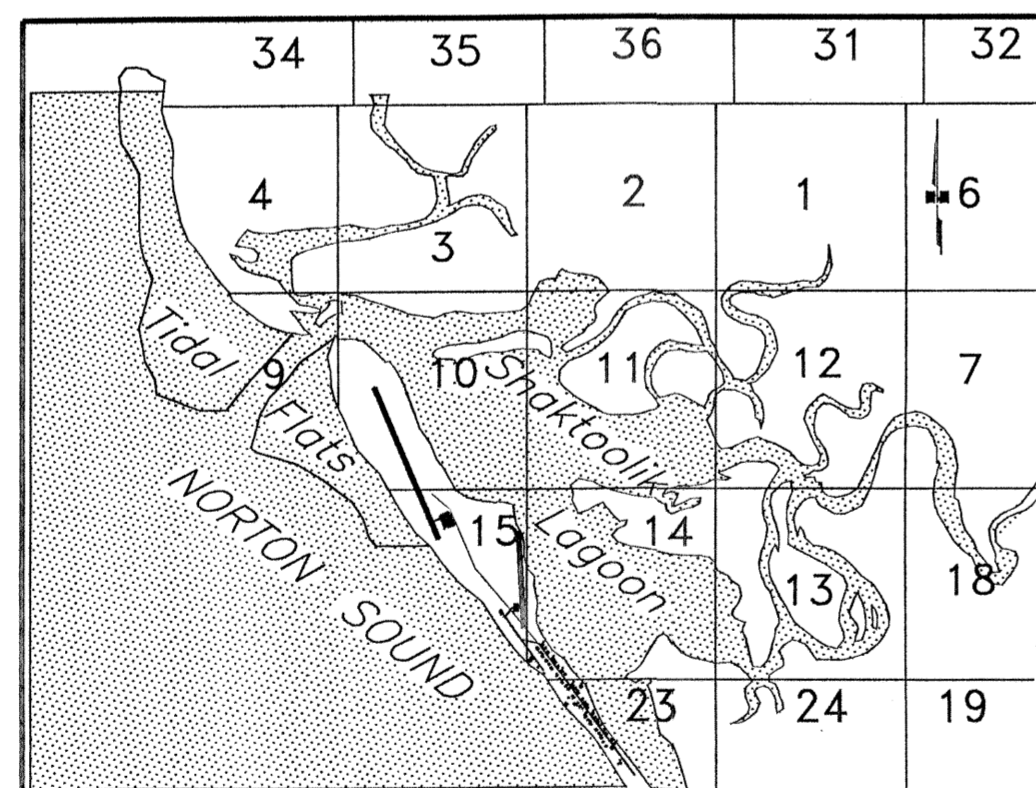
SOURCE: UNIVERSITY OF ALASKA
ENVIRONMENTAL AND NATURAL
RESOURCES INSTITUTE

WIND DATA PERIOD: SEPT 1989 - SEPT 1991

10.5 KNOTS COVERAGE = 93.71%
13 KNOTS COVERAGE = 96.60%
16 KNOTS COVERAGE = 98.76%
20 KNOTS COVERAGE = 99.59%



LOCATION MAP



VICINITY MAP

TOWNSHIP 13 SOUTH, RANGE 13 WEST
KATEEL RIVER MERIDIAN
USGS QUAD: NORTON BAY B-5
SCALE: 1" = 1 MILE

RUNWAY DATA

	RUNWAY 14 / 32	
	EXISTING	ULTIMATE
% WIND COVERAGE	96.6%	SAME
RUNWAY SURFACE TYPE	AGGREGATE	SAME
INSTRUMENT RUNWAY	NP	SAME
PAVEMENT STRENGTH	N/A	SAME
APPROACH SURFACES	20:1	34:1
RUNWAY LIGHTING	MIRL	SAME
RUNWAY MARKING	NONE	SAME
NAVIGATION AIDS	NONE	GPS
COMMUNICATION AIDS	NONE	SAME
RUNWAY SAFETY AREA	150'X4600'	SAME
RUNWAY DIMENSION	75'X4000'	SAME
OBJECT FREE AREA RUNWAY	500'X4600'	SAME
OBJECT FREE AREA TAXIWAY	131'X175'	SAME
T/W WIDTH	50'	SAME
T/W SAFETY AREA WIDTH	80'	SAME
T/W OFA WIDTH	131'	SAME

BUILDING TABLE

	BUILDING NAME	ELEVATION
①	ULTIMATE ELECTRICAL EQUIPMENT ENCLOSURE	30'
②	ULTIMATE DOT EQUIPMENT STORAGE BUILDING	47' ±
③	ULTIMATE PASSENGER SHELTER BUILDING	32'

AIRPORT DATA

	EXISTING	ULTIMATE
AIRPORT REFERENCE CODE	B-II	SAME
AIRPORT ELEVATION (M.S.L.)	20.5'	SAME
AIRPORT REFERENCE POINT (A.R.P.)	LAT. 64°22'16.30"N. LONG. 161°13'25.39"W.	SAME
THRESHOLD R/W 14 (NAD 83)	LAT 64°22'34.61"N. LONG 161°13'42.11"W.	SAME
THRESHOLD R/W 32 (NAD 83)	LAT 64°21'57.99"N. LONG 161°13'08.67"W.	SAME
AIRPORT AND TERMINAL NAVAIDS	ROT. BEACON	R/B AND PAPI
RAMP LIGHTING	NONE	SAME
TAXIWAY LIGHTING	MITL	SAME
MEAN TEMP. HOTTEST MONTH	55°	SAME

LEGEND

	EXISTING	ULTIMATE
AIRPORT PROPERTY LINE	NONE	---
BUILDING RESTRICTION LINE (B.R.L.)	NONE	B.R.L.
AIRPORT REFERENCE POINT	NONE	⊙
BUILDINGS	NONE	■
ROADWAYS	---	---
THRESHOLD LIGHTING	NONE	***
WIND CONE (LIGHTED) WITH SEGMENTED CIRCLE	NONE	⊙
WATER (SHORELINE, PONDS, ETC.)	NONE	▨
DEVELOPMENT	NONE	▨
ELEVATION CONTOURS	10'	10'
TUNDRA/MARSHLANDS	▨	▨
OBJECT FREE AREA (O.F.A.)	NONE	---
SURVEY REBAR	○	○

96AAL-135N&A

DESIGN KGW

DRAWN KGW

CHECKED JJA

BY	DATE	REVISIONS
	8/15/03	AS-BUILT
	9/26/97	FAA APPROVED
CAT	9/23/97	CORRECTED COORDINATES, ADDED NOTES.
CAT	9/9/97	BORDER CHANGES

STATE OF ALASKA
DEPARTMENT OF TRANSPORTATION AND PUBLIC FACILITIES
NORTHERN REGION-WESTERN DISTRICT-DESIGN & CONSTRUCTION-AVIATION

APPROVED
Patricia D. Miller
PATRICIA D. MILLER, P.E. AIRPORT DESIGN GROUP CHIEF

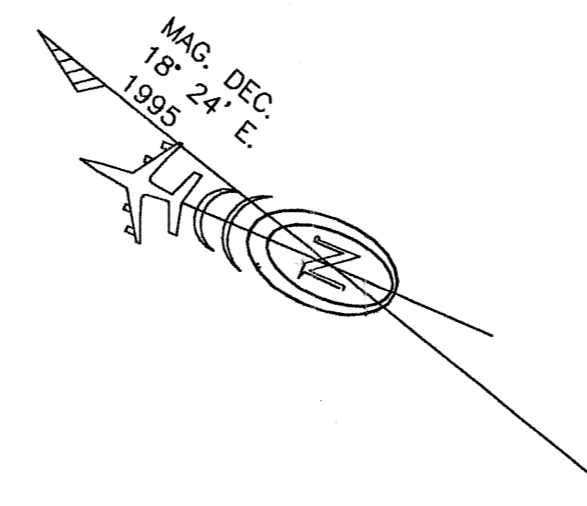
DATE 8/27/03

Layout Plan Conditionally Approved:
By *John T. Jorgensen*
AIRPORTS DIVISION, ALASKAN REGION
Date 8/29/03

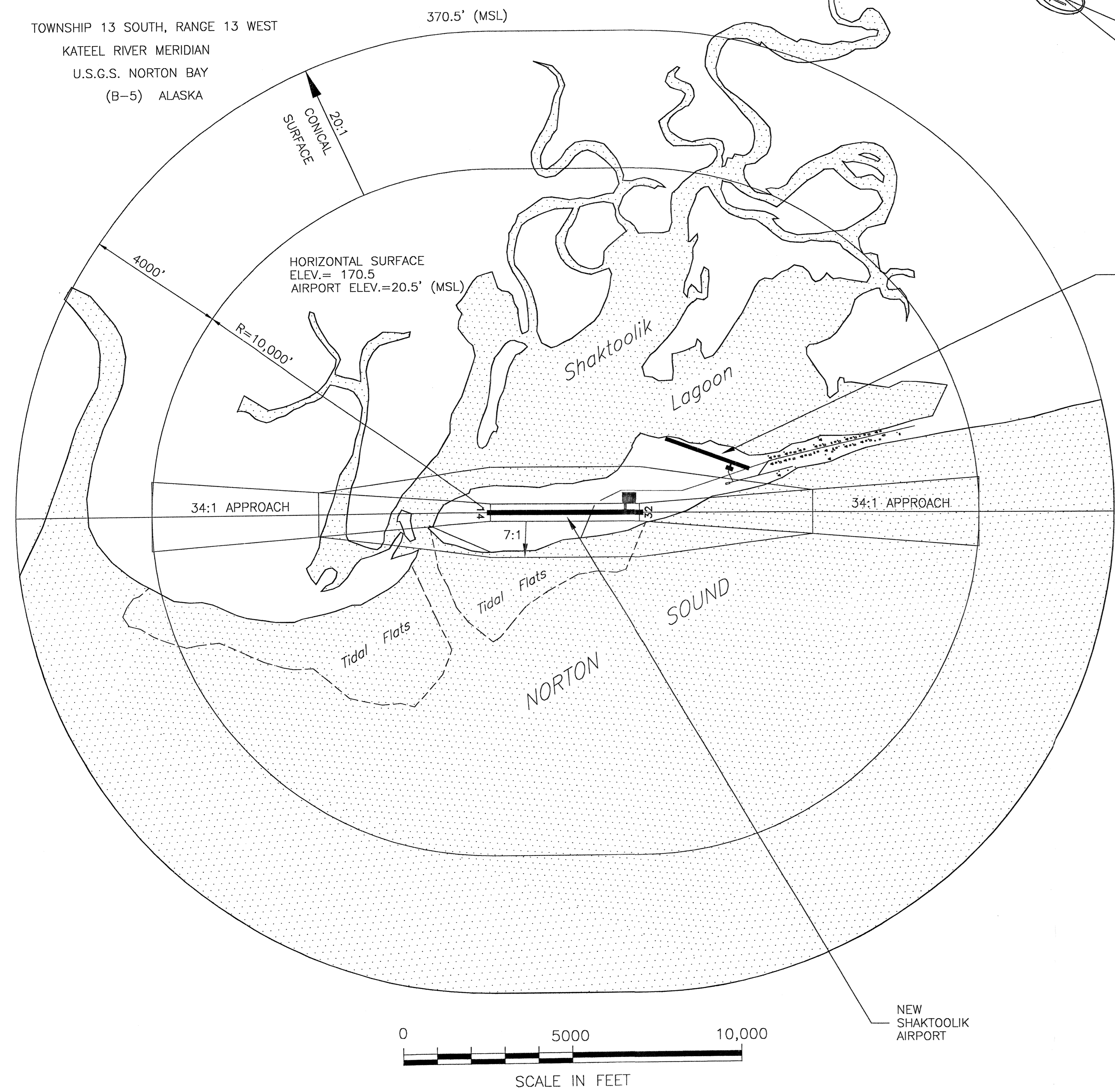
THIS ALP SUPERCEDES THE ALP DATED 9/26/97
AND BASED ON AS-BUILTS

SHAKTOOLIK AIRPORT
AIRPORT LAYOUT PLAN

SHEET
1
OF
3

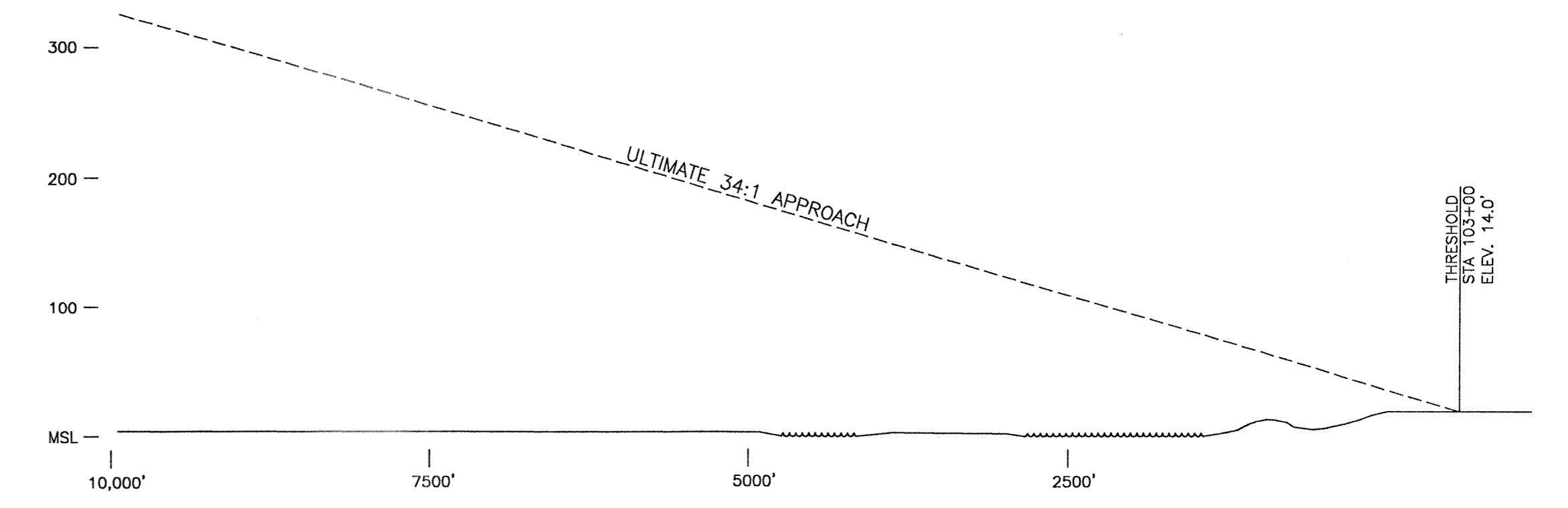


TOWNSHIP 13 SOUTH, RANGE 13 WEST
 KATEEL RIVER MERIDIAN
 U.S.G.S. NORTON BAY
 (B-5) ALASKA

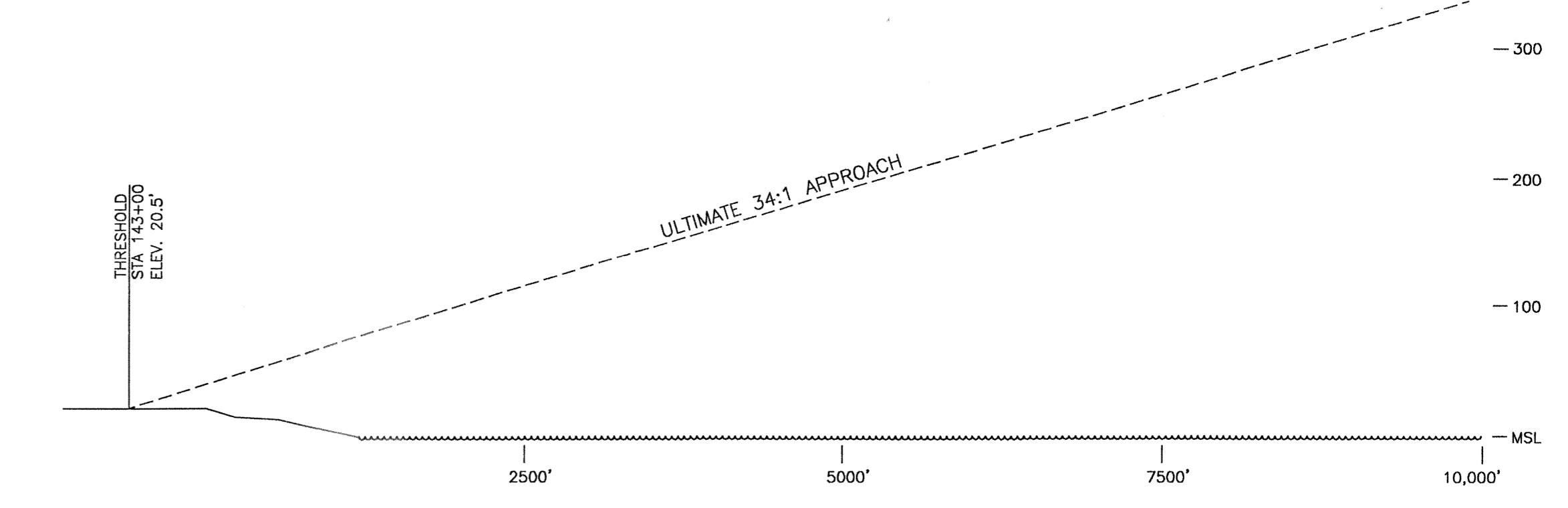


AIRPORT CLOSED

NEW SHAKTOOLIK AIRPORT



RUNWAY 14 APPROACH SLOPE PROFILE



RUNWAY 32 APPROACH SLOPE PROFILE

OBSTRUCTION TABLE			
DESCRIPTION	ELEVATION (MSL)	OBSTRUCTION	RECOMMENDATION
		NO OBSTRUCTIONS	

DESIGN	KGW		
DRAWN	KGW		
CHECKED	JJA		
BY	DATE	REVISIONS	
	8/15/03	AS-BUILT	
	9/26/97	FAA APPROVED	
CAT	9/9/97	CHANGED "ZONE" TO "SLOPE", 300' TO 200'	

STATE OF ALASKA
 DEPARTMENT OF TRANSPORTATION AND PUBLIC FACILITIES
 NORTHERN REGION-WESTERN DISTRICT-DESIGN & CONSTRUCTION-AVIATION

APPROVED
Patricia D. Miller
 PATRICIA D. MILLER, P.E. AIRPORT DESIGN GROUP CHIEF

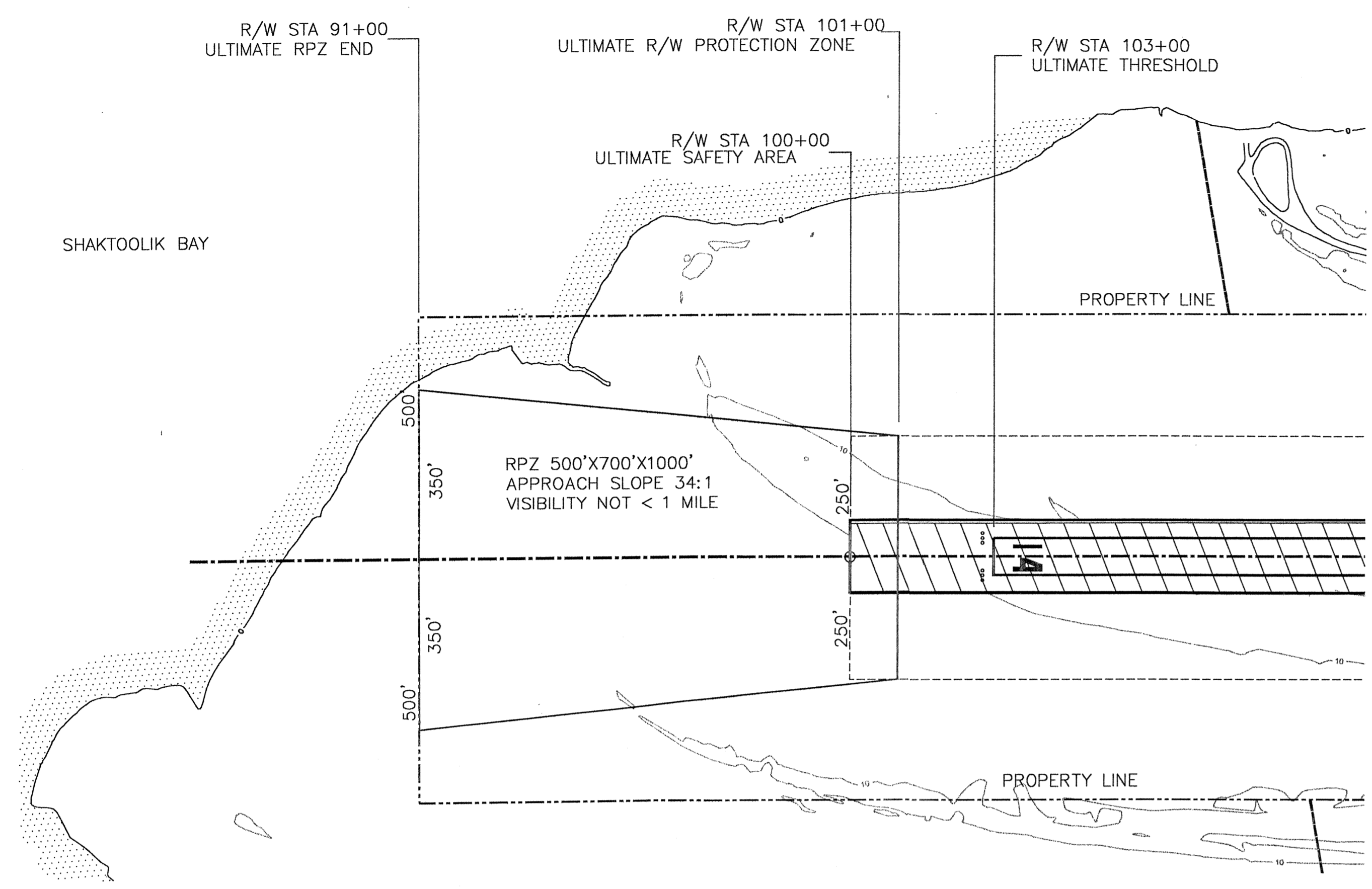
DATE 8/27/03

Layout Plan Conditionally Approved:
 By *J.M. Smith*
 AIRPORTS DIVISION, ALASKAN REGION
 Date 8/25/03

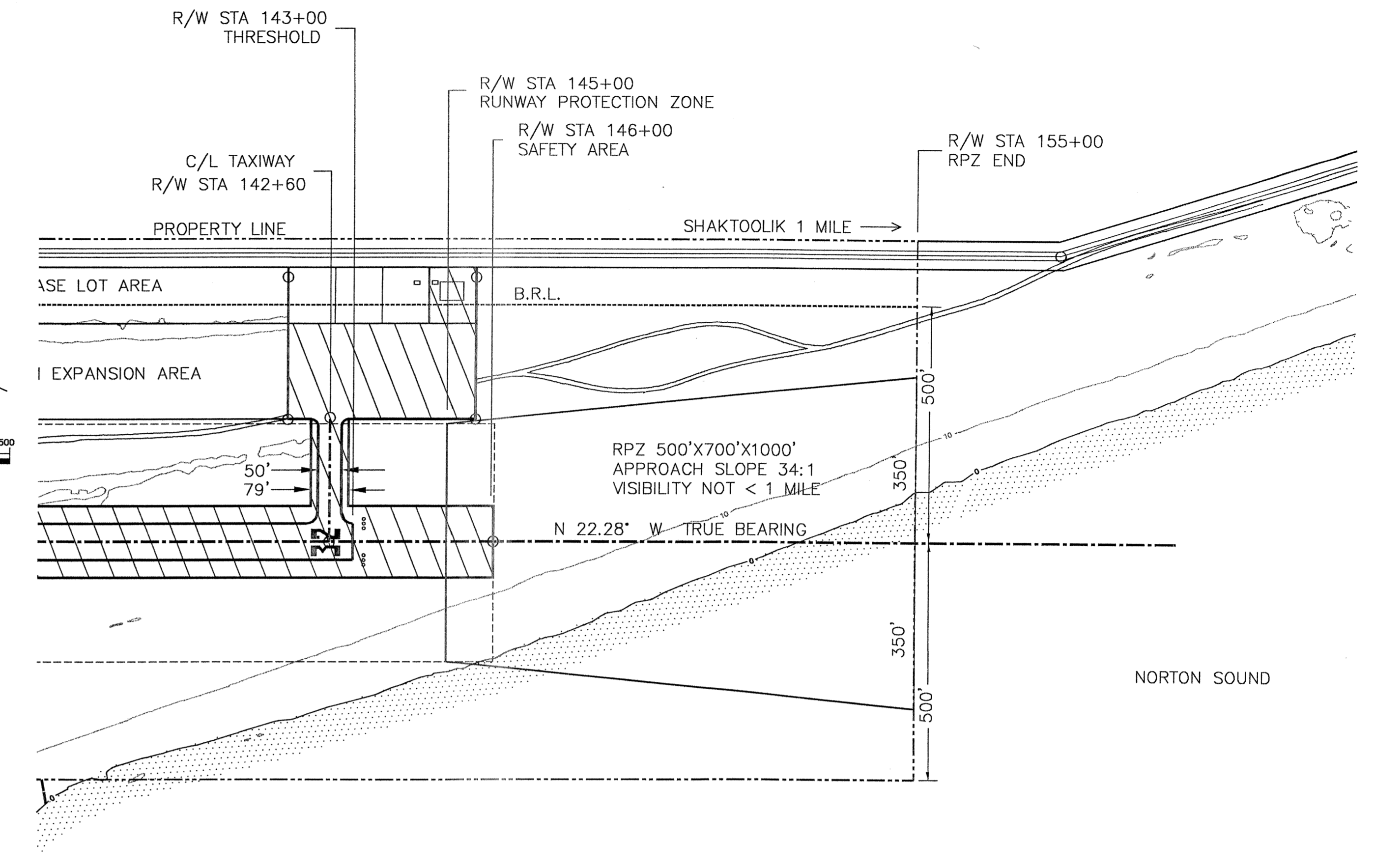
THIS ALP SUPERCEDES THE ALP DATED 9/26/97 AND BASED ON AS-BUILTS

SHAKTOOLIK AIRPORT
 AIRSPACE DRAWING

SHEET
 2 OF 3



R/W 14 PROTECTION ZONE PLAN VIEW



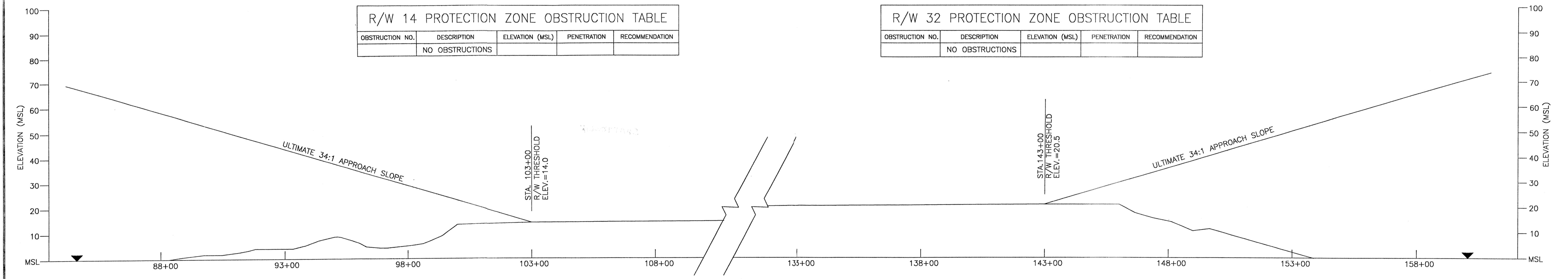
R/W 32 PROTECTION ZONE PLAN VIEW

R/W 14 PROTECTION ZONE OBSTRUCTION TABLE

OBSTRUCTION NO.	DESCRIPTION	ELEVATION (MSL)	PENETRATION	RECOMMENDATION
NO OBSTRUCTIONS				

R/W 32 PROTECTION ZONE OBSTRUCTION TABLE

OBSTRUCTION NO.	DESCRIPTION	ELEVATION (MSL)	PENETRATION	RECOMMENDATION
NO OBSTRUCTIONS				



RUNWAY 14-32 PROTECTION ZONE PROFILE

DESIGN	KGW		
DRAWN	KGW	8/15/03	AS-BUILT
CHECKED	JJA	9/26/97	FAA APPROVED
		CAT 9/9/97	CHANGED 300' TO 200'
BY	DATE		REVISIONS

STATE OF ALASKA
 DEPARTMENT OF TRANSPORTATION AND PUBLIC FACILITIES
 NORTHERN REGION-WESTERN DISTRICT-DESIGN & CONSTRUCTION-AVIATION

APPROVED
Patricia D. Miller
 BY PATRICIA D. MILLER, P.E. AIRPORT DESIGN GROUP CHIEF

DATE 8/27/03

Layout Plan Conditionally Approved:
 By *J. B. Smith*
 AIRPORTS DIVISION, ALASKAN REGION
 Date 8/29/03

THIS ALP SUPERCEDES THE ALP DATED 9/26/97
 AND BASED ON AS-BUILTS

SHAKTOOLIK AIRPORT
 RUNWAY 14 / 32
 INNER PORTION OF
 APPROACH SURFACE

SHEET
 3
 OF
 3