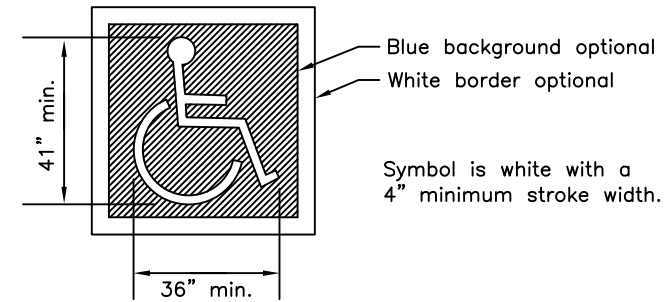


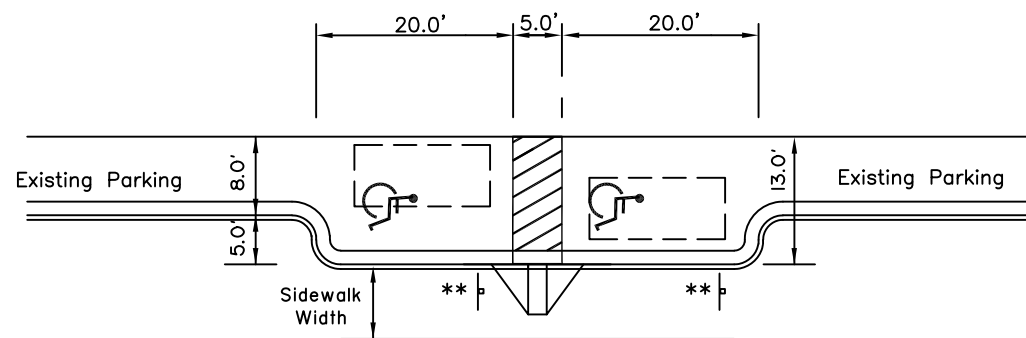
PARKING LOT ACCESSIBLE PERPENDICULAR PARKING



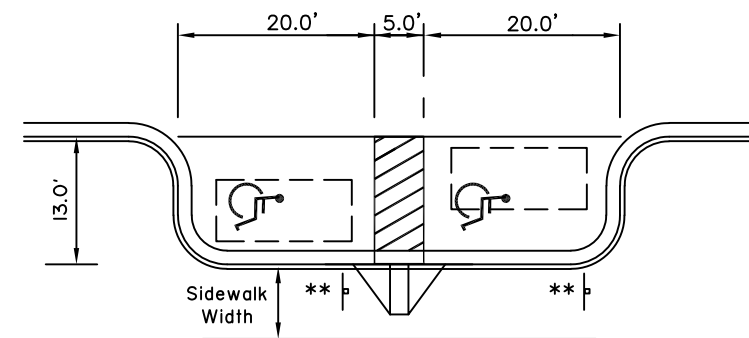
PAVEMENT MARKING SYMBOL DETAIL

GENERAL NOTES:

1. Accessible aisles and accessible routes and those pathways leading from the accessible parking space to the sidewalk shall be free of any obstructions, fixtures or loose surfaces.
2. See standard drawing I-20, I-21, I-22 for curb and curb ramp details.
3. All curb ramps shall be constructed of concrete.
4. The slope for all accessible parking spaces, van accessible parking spaces and access aisles shall not exceed 50:1 in any direction.
5. Although only perpendicular ramps are shown, either parallel or perpendicular ramps are allowable, space permitting.



ACCESSIBLE ON-STREET PARALLEL PARKING PARTIAL INSET



ACCESSIBLE ON-STREET PARALLEL PARKING FULL INSET

ON-STREET PARALLEL PARKING NOTES

1. The 13' width provides for 8' wide parking with a 5' wide access aisle on either side of a car.
2. Add a new curb ramp and 5' aisle between parking places for each additional two accessible parking spaces.
3. Parking spaces may be made van accessible by providing an unobstructed 8' sidewalk width next to each parking space. Ensure curb ramps, parking meters, sign posts, etc. do not encroach on the area where a van's lift would operate.
4. In some cases, ADAAG may allow normal-width parking spaces at the beginning and end of blocks to be designated as accessible. See the latest ADAAG.

** R7-8 "Reserved Parking" and, where appropriate (see note 3), R7-8A, "Van Accessible".

State of Alaska DOT&PF
ALASKA STANDARD PLAN

ACCESSIBLE PARKING

Adopted as an Alaska Standard Plan by: *Kenneth J. Fisher*
Kenneth J. Fisher, P.E.
Chief Engineer

Adoption Date: 02/08/2019

Last Code and Stds. Review By: Date:

Next Code and Standards Review date: 02/08/2029