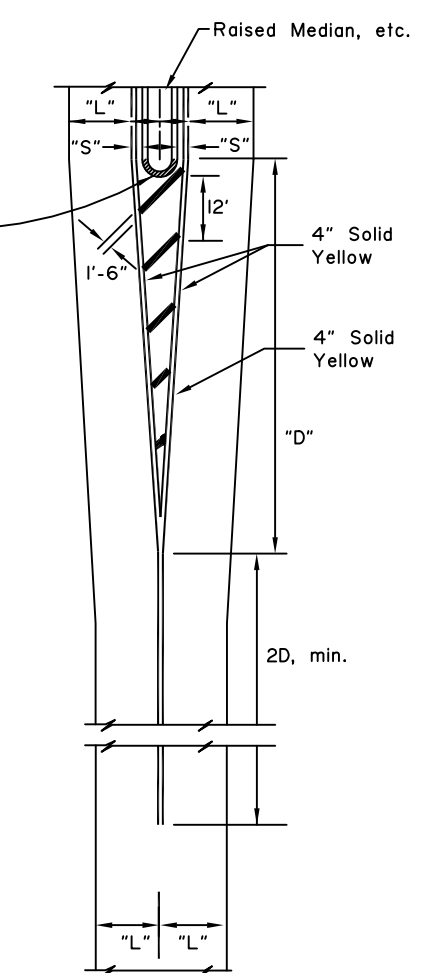
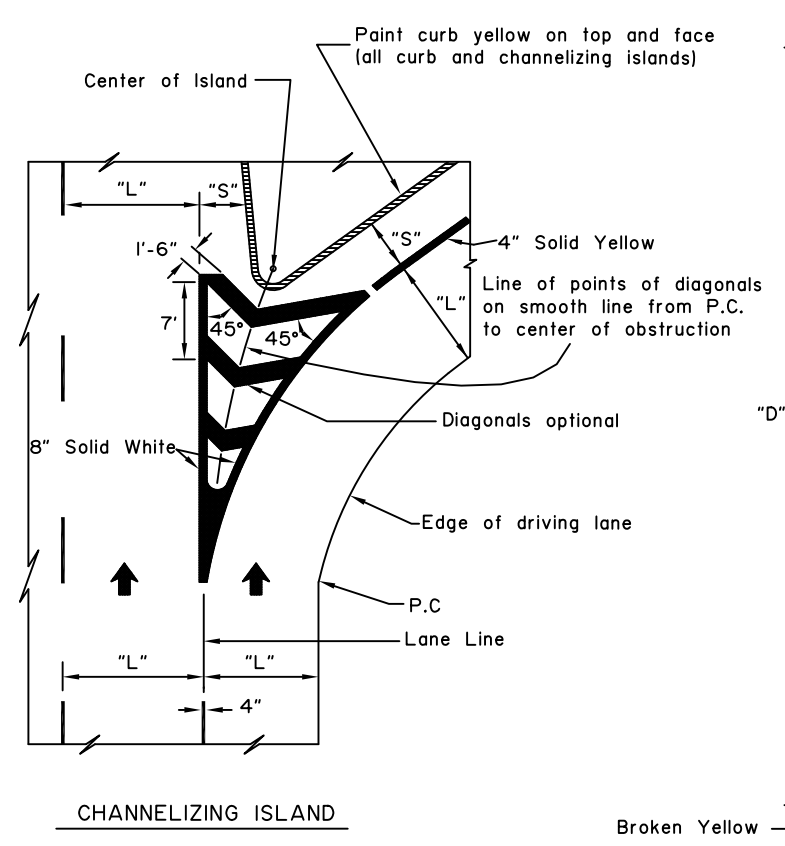


FOUR OR MORE LANES
— DRIVE TO RIGHT —

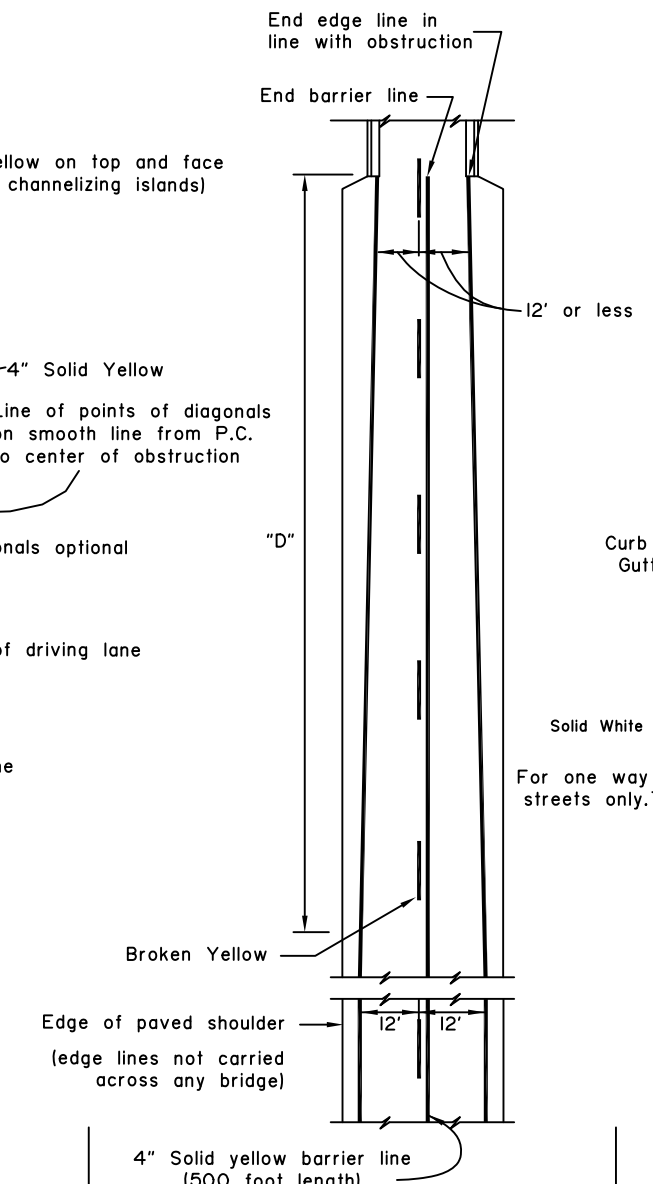


TWO LANES
— DRIVE TO RIGHT —
White longitudinal and diagonal markers identical to Four Lane Arrangement.

NOTES: "D" = Speed limit (mph) X "S" (offset width in feet) or as indicated on the plans. Minimum "D" = 100 feet urban, 200 feet rural.

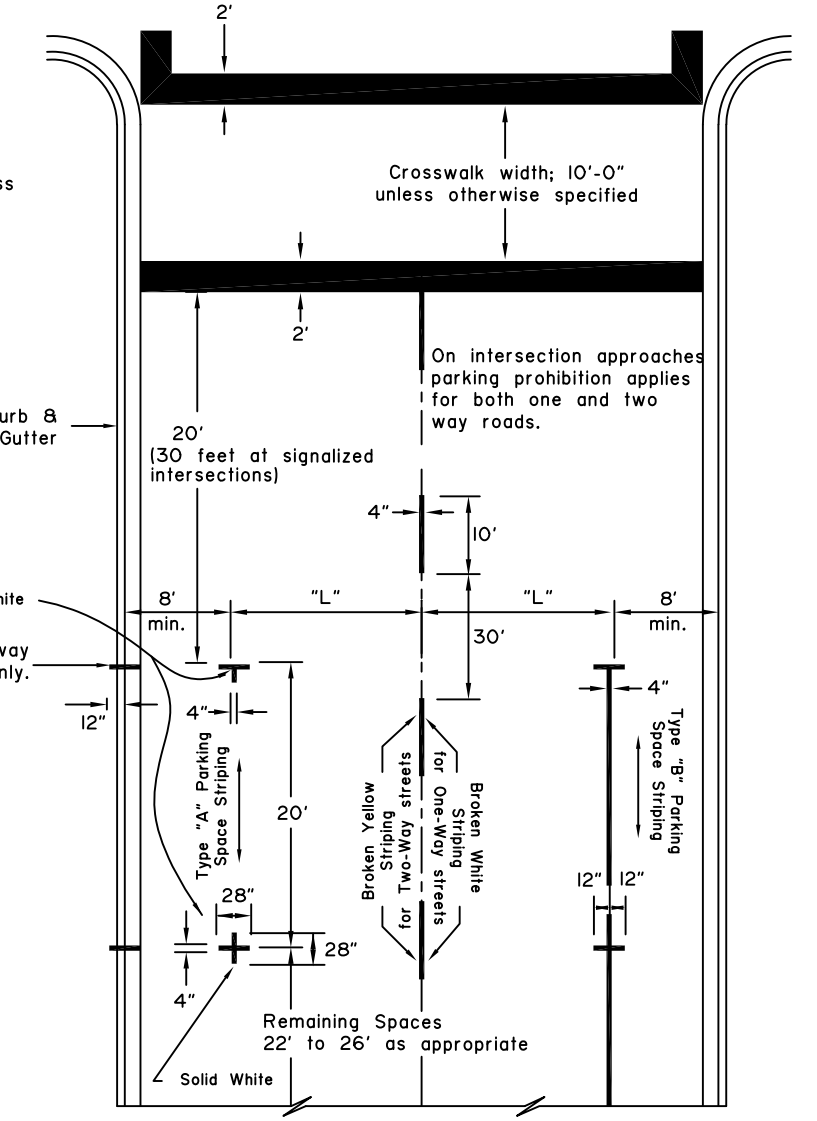


CHANNELIZING ISLAND



EDGE LINE TRANSITION TO NARROW BRIDGE AND APPROACH BARRIER LINE

4" Solid yellow barrier line (500 foot length)
Note: On bridges over 24' wide use standard pavement markings. Barrier lines not used unless otherwise required.

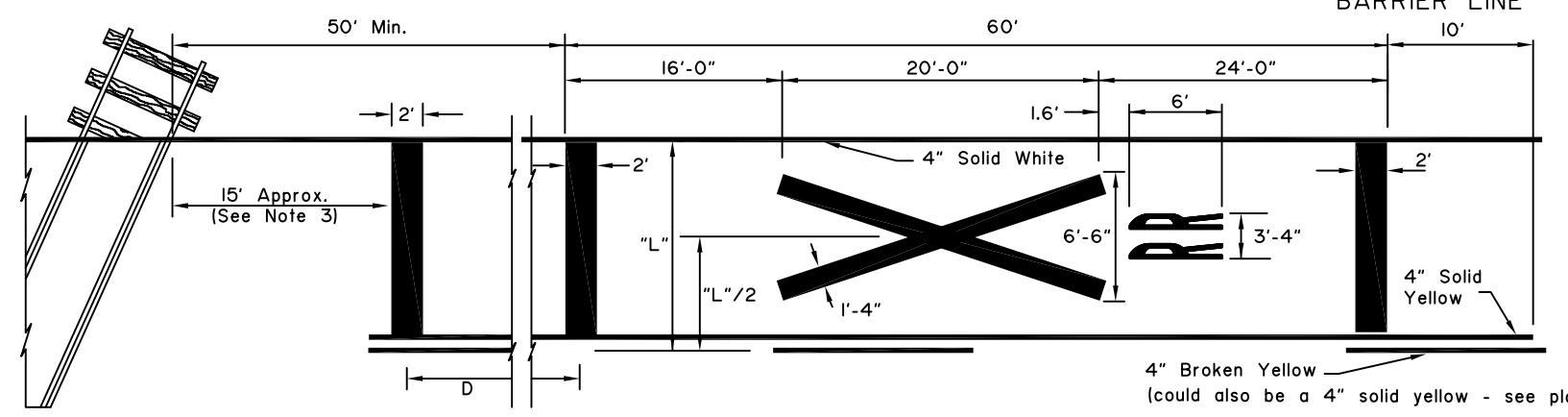


CENTERLINES FOR TWO LANE TWO WAY URBAN ROADS-PARKING LIMIT LINES

RAILROAD CROSSING NOTES:

- All markings solid white unless indicated otherwise.
- On 4-lane roadways place railroad crossing approach markings in each lane of the approach.
- Locate Stop Bar 15' from railroad track or 8' from gate, if present.
- Place edge lines and lane lines on a uni-directional approach in a normal manner except that the lane line(s) shall be solid 4" white in lieu of broken for a distance of [D+60'] in advance of the stop bands.

POSTED LIMIT	D
30 M.P.H.	225'
40	350'
50	475'
60	625'



APPROACH TO RAILROAD CROSSING ON 2 LANE 2 WAY HIGHWAY

GENERAL NOTES:

- "S"= offset distance as shown on the plans, otherwise 1 to 2 feet.
- "L"= driving lane width.
- See the Alaska Traffic Manual for additional guidance and/or restrictions on the use of traffic control devices.

NOT TO SCALE

State of Alaska DOT&PF
ALASKA STANDARD PLAN
PAVEMENT MAKING APPLICATIONS

Adopted as an Alaska Standard Plan by: *Kenneth J. Fisher, P.E.*
Kenneth J. Fisher, P.E.
Chief Engineer

Adoption Date: 02/08/2019

Last Code and Stds. Review By: _____ Date: _____
Next Code and Standards Review date: 02/08/2029